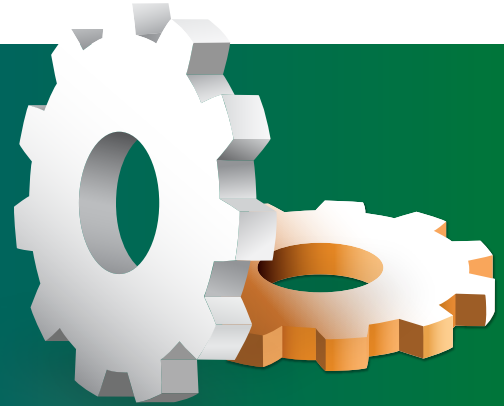


## Advanced Feature PrintPAL Printer Mapping Utility



UniPrint™ PrintPAL is an integrated GUI-based utility that allows network administrators to create rules to automatically assign printers to specific user profiles based on:

- Active Directory user/group name or any LDAP-based services
- Host names
- Login client IP address or IP range

The PrintPAL printer mapping utility ensures that users are always assigned with the correct printers whenever and wherever they are working.

## How It Works

Figure 1 shows the GUI interface of PrintPAL. Network administrators can assign printers based on the different internal conditions. As users log into their systems, the rules will be processed and the appropriate printers are mapped according to the user profiles. If and when users move to other PCs or IP ranges, different sets of rules will apply and printer mapping will be updated accordingly.

Fig 1: Screen display of UniPrint Infinity PrintPAL

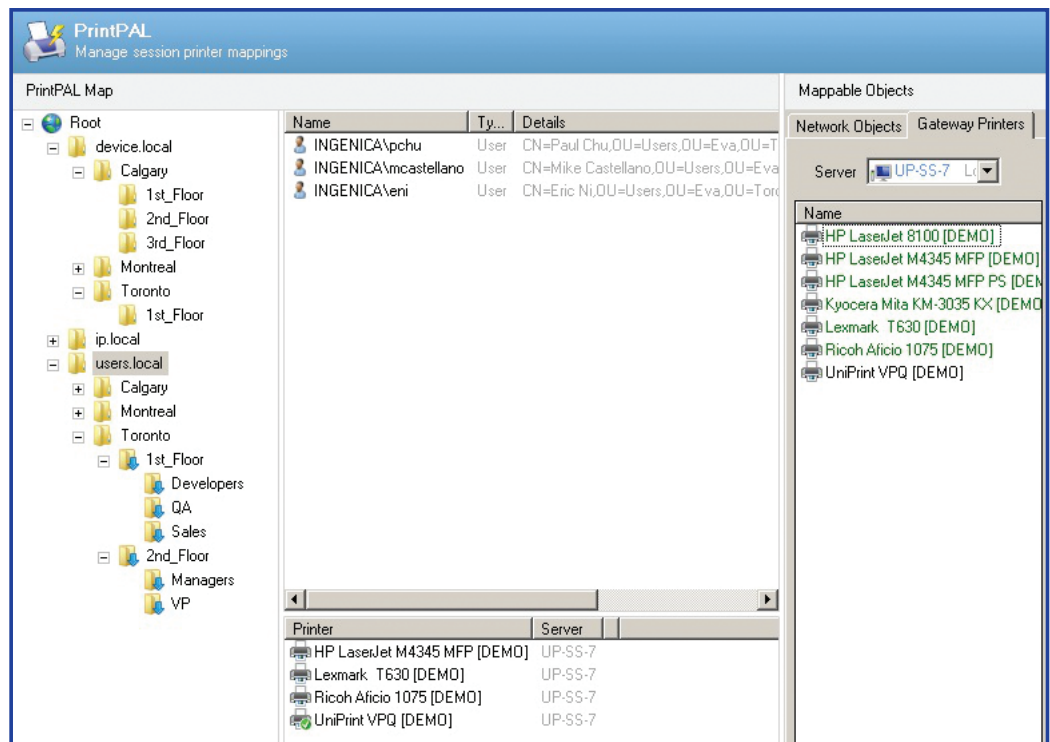
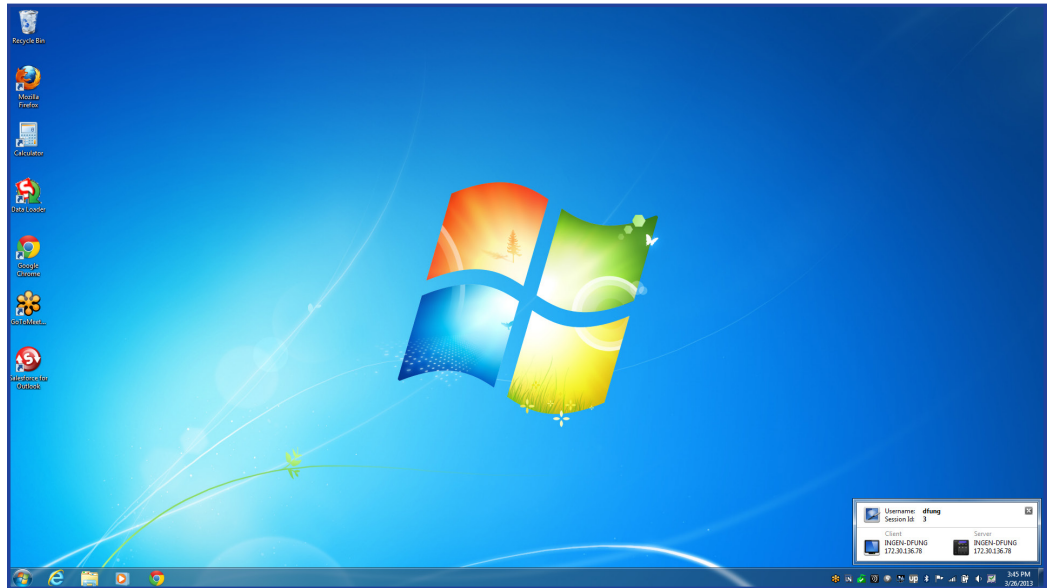


Fig. 2: Screen display of Client IP address

Furthermore, unlike other proximity or location-based printing software for Citrix or Microsoft terminal server environments, UniPrint Infinity keeps track of the client IP address. This allows users to print to the printer closest to their physical locations.



## Features

- Assign printers to users based on their location or Microsoft Active Directory membership
- Fully integrated GUI design
- LDAP integration
- Session printer assignment re-evaluated on session reconnect
- Manual override for users to choose their own printers

## Benefits

- Reduce help desk calls for routine printer mapping
- Increase employee productivity by ensuring correct printers are assigned for users' locations
- Increase security by reducing the risk of users printing documents to wrong printers

For further information on UniPrint Infinity™ and the PrintPAL printer mapping utility advanced feature, visit [www.uniprint.net](http://www.uniprint.net) or e-mail [sales@uniprint.net](mailto:sales@uniprint.net)