



Quick Start Guide

For SecurePrint Deployments

Released: February 2013
Version 8.1

Revised: August 12, 2013 11:22 am

Copyright Notice

UniPrint, a division of ACCEO Solutions, Inc. and its affiliates, makes no representations or warranties with respect to the contents or use of this publication. UniPrint, a division of ACCEO Solutions, Inc. specially disclaims any expressed or implied warranties, merchantability or fitness for any particular purpose. UniPrint, a division of ACCEO Solutions, Inc. reserves the right to make any changes in specifications and other information contained in this publication without prior notice and without obligation to notify any person or entity of such revisions or changes.

© Copyright 1999 - 2013 UniPrint, a division of ACCEO Solutions, Inc. All rights reserved.

Information in this document is subject to change without notice. Companies, names and data used in examples herein are fictitious unless otherwise noted. Other than printing one copy for personal use, no part of this document may be reproduced or transmitted in any form or by any means, electronic or mechanical, for any purposes, without the expressed written consent of:

UniPrint, a division of ACCEO Solutions, Inc.
1 Eva Road, Suite 309
Toronto, Ontario
Canada M9C 4Z5
(416) 503-9800
Toll Free: (866) 488-3188 (North America only)
www.uniprint.net

Trademark Acknowledgements

UniPrint is a trademark of UniPrint, a division of ACCEO Solutions, Inc. United States Patent No. 7,064,856.

Microsoft, Windows, Windows 2003/2008, Windows XP, Vista, Windows 7, Microsoft Access, Microsoft Word, Remote Desktop Protocol (RDP), ASP.NET and Active Directory are either registered trademarks or trademarks of Microsoft Corporation.

Citrix, MetaFrame, Presentation Server, XenApp and ICA (Independent Computing Architecture) are registered trademarks or trademarks of Citrix Systems.

Adobe, Acrobat, Reader are registered trademarks of Adobe Systems Inc.

All other trademarks and registered trademarks are the property of their owners.

Table of Contents

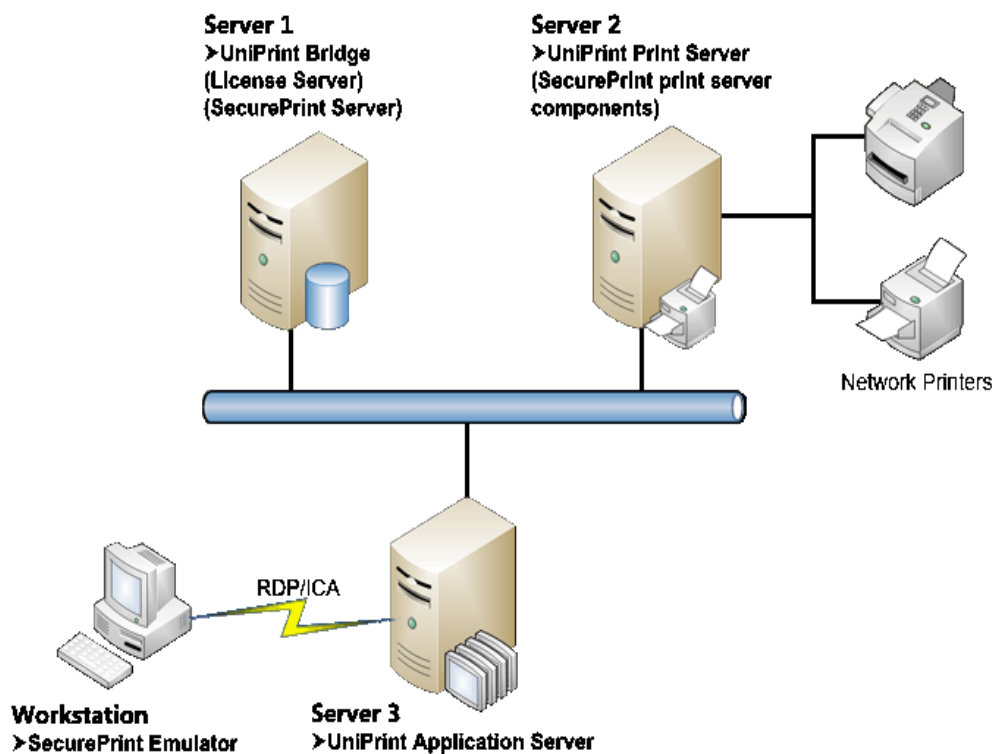
- Introduction 1**
- Installation Scenario 1**
 - Recommended System Requirements 2
 - Recommended Installation Procedure 2
- STEP 1: Install UniPrint Bridge 3**
- STEP 2: Install UniPrint Print Server 6**
- STEP 3: Install UniPrint Application Server 9**
- STEP 4: Install and Activate the SecurePrint Emulator 12**
- STEP 5: Install a Test Printer On The UniPrint Print Server 15**
- STEP 6: Add Printers to the vPad or Emulator 17**
- STEP 7: Add the Test Printer and UniPrint VPQ In A User Session 18**
- Printing From An ICA/RDP Session to the UniPrint VPQ 21**

Introduction

This step-by-step guide is intended for those who want set up UniPrint Infinity with minimal configuration. Only the necessary steps required to start printing from an ICA/RDP session will be covered. For additional assistance on customizing UniPrint Infinity or setting up many of UniPrint Infinity's features such as SecurePrint, Archiving, Statistics Monitoring and vPad refer to the [UniPrint Infinity Administrator's Guide](#).

This quick start guide is specific to secure pull printing with SecurePrint. All components will be installed with the exception of Archiving and Statistics Monitoring, such that full testing can be performed. However, only instructions on printing from a user session will be presented.

Installation Scenario



This scenario requires three servers and one workstation. The first server will have UniPrint Bridge with the License Server, and SecurePrint Server installed. The second server will have UniPrint Print Server and SecurePrint print server components installed. The third server will have UniPrint Application Server installed. The workstation will have the SecurePrint emulator installed and also function as a client to connect to the application server for testing purposes. If a vPad device is available, the workstation will only be required for connecting to the terminal server.

Recommended System Requirements



NOTE: All servers require .NET Framework 3.5. If only .NET Framework 4.0 has been installed, then .NET Framework 3.5 is still required.

Server 1: UniPrint Bridge requires one of the following supported operating systems:

- Microsoft Windows Server 2003 SP1
- Microsoft Windows Server 2008 or R2
- Microsoft Windows Server 2012

Server 2: UniPrint Print Server requires one of the following supported operating systems:

- Microsoft Windows XP Professional
- Microsoft Windows Vista
- Microsoft Windows 7
- Microsoft Windows 8
- Microsoft Windows Server 2003 SP1
- Microsoft Windows Server 2008 or R2
- Microsoft Windows Server 2012

Server 3: UniPrint Application Server requires one of the following supported operating systems:

- Microsoft Windows Server 2003 SP1 with Terminal Services installed in Application Server Mode
- Microsoft Windows Server 2008 or R2 with Remote Desktop Services role installed
- Microsoft Windows Server 2012 with Remote Desktop Services role installed

Workstation: SecurePrint emulator and connecting client device requires one of the following supported operating systems:

- Microsoft Windows XP Professional
- Microsoft Windows Vista
- Microsoft Windows 7
- Microsoft Windows 7
- Microsoft Windows Server 2003
- Microsoft Windows Server 2008 or R2
- Microsoft Windows Server 2012

Recommended Installation Procedure



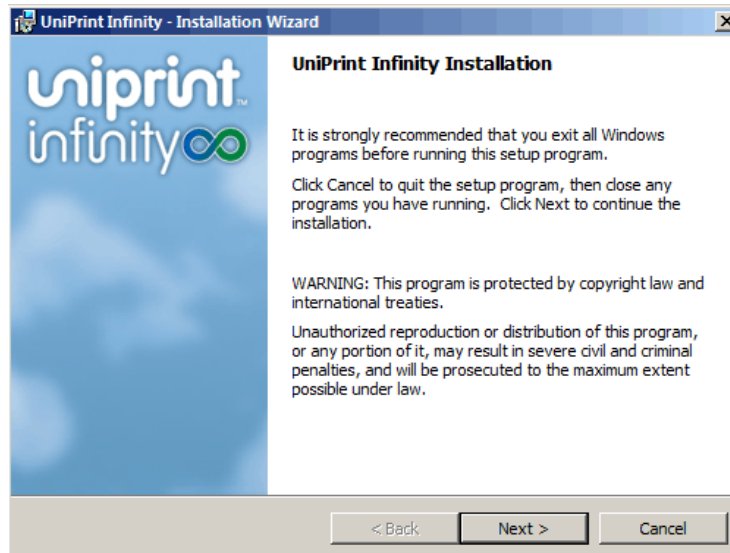
NOTE: The following instructions explain how to deploy UniPrint Infinity in a thin-client or a combination thin- and thick-client environment using the minimum number of computers. This installation scenario is designed and intended for testing purposes and does not reflect production best practices.

1. Install UniPrint Bridge along with the license server and SecurePrint Server on Server 1.
 2. Install UniPrint Print Server along with the SecurePrint print server components on Server 2.
 3. Install UniPrint Application Server on Server 3.
 4. Install the SecurePrint emulator on the workstation and then activate it on Server 1. If you already have a vPad device, then you don't need to install the SecurePrint emulator, since the vPad comes with pre-installed software. However, you will still need to activate the vPad on the SecurePrint Server (Server 1).
 5. Install a test printer on the UniPrint Print Server (Server 2).
-

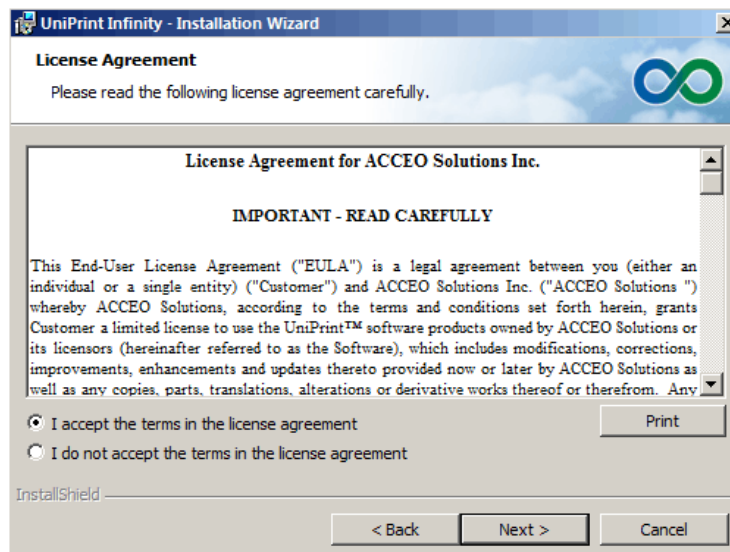
6. Add the test printer to the vPad through the UniPrint Management Console on Server 1.
7. Add the test printer in a user session. PrintPAL can be used to replace this step. See the [UniPrint Infinity Administrator's Guide](#) for instructions on how to set up PrintPAL.

STEP 1: Install UniPrint Bridge

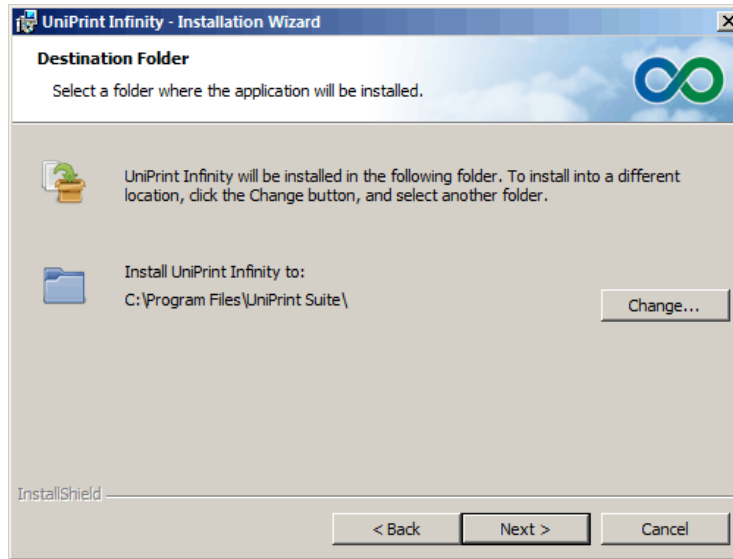
1. On Server 1, run the installation program **Setup.exe** as an administrator.
2. If running **Setup.exe** with UAC enabled, the **User Account Control** dialog box will appear. Click **Yes** to continue.
3. In the **UniPrint Infinity Installation** dialog box, click **Next**.



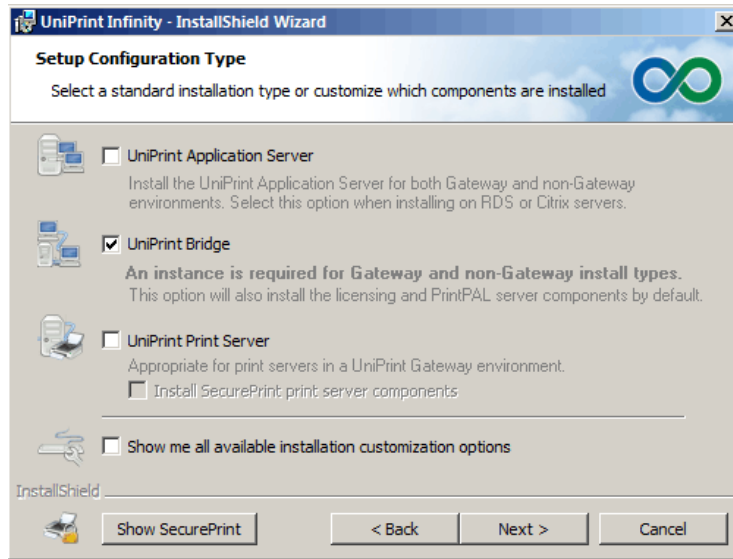
4. In the **License Agreement** dialog box, click **I accept the terms in the license agreement** and then click **Next**.



5. In the **Destination Folder** dialog box, click **Next** to accept the default location for the UniPrint program files. Click **Change** to select a different location.



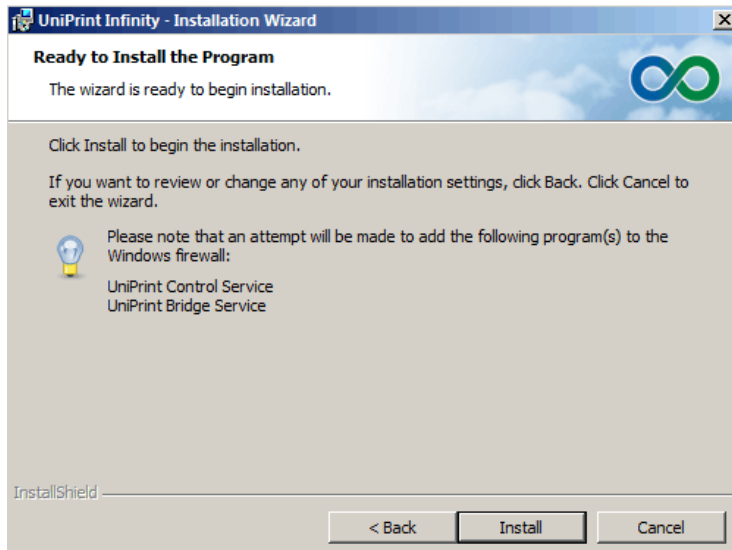
6. In the **Setup Configuration Type** dialog box, select **UniPrint Bridge** and then click the **Show SecurePrint** button.



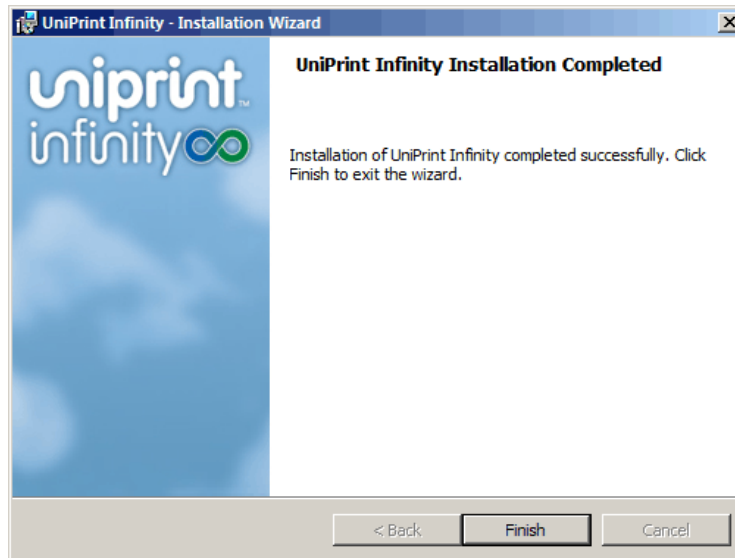
7. Select **UniPrint SecurePrint Server (Creates UniPrint VPQ Printer)** and then click **Next**.



8. In the **Ready to Install the Program** dialog box, click **Install**. The UniPrint installer will copy files to the destination folder.



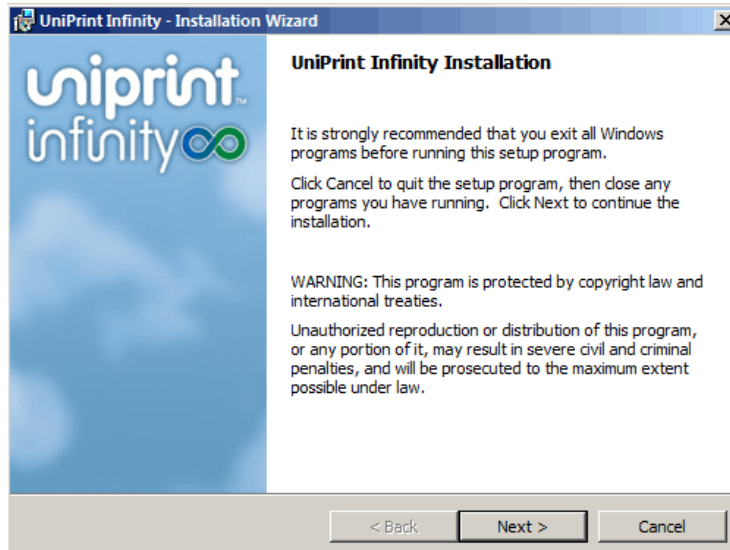
9. Click **Finish** to complete the installation.



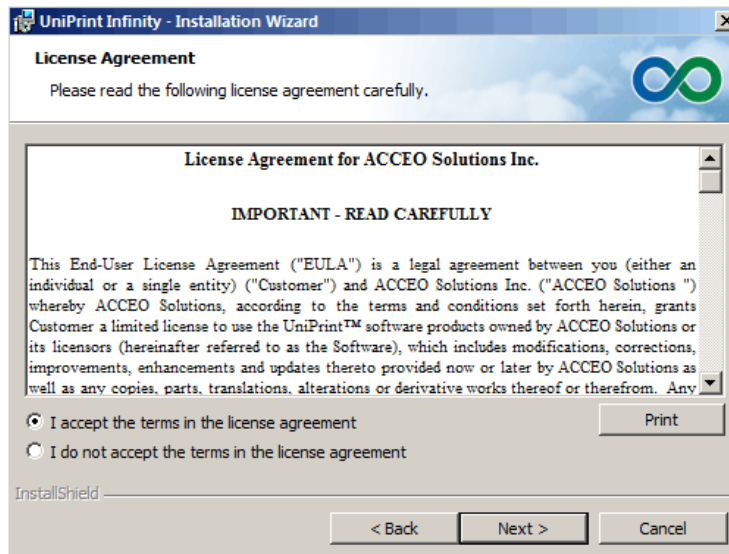
10. Record the IP address of this computer.

STEP 2: Install UniPrint Print Server

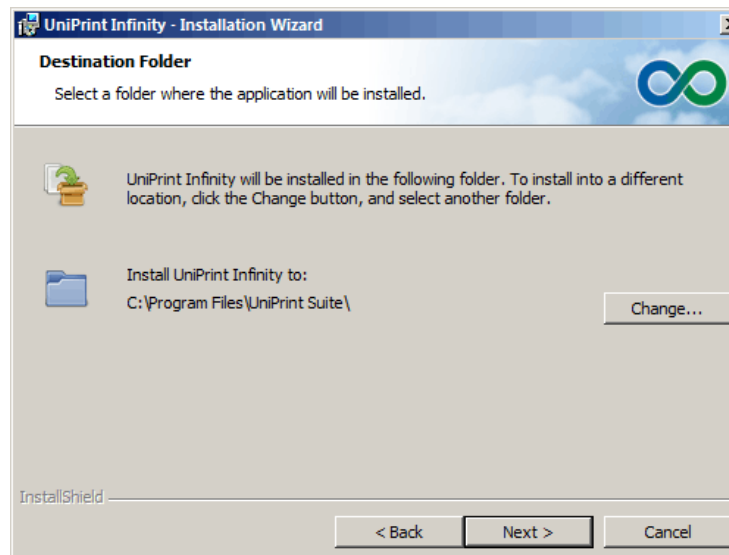
1. On Server 2, run the installation program **Setup.exe** as an administrator.
2. In the **UniPrint Infinity Installation** dialog box, click **Next**.



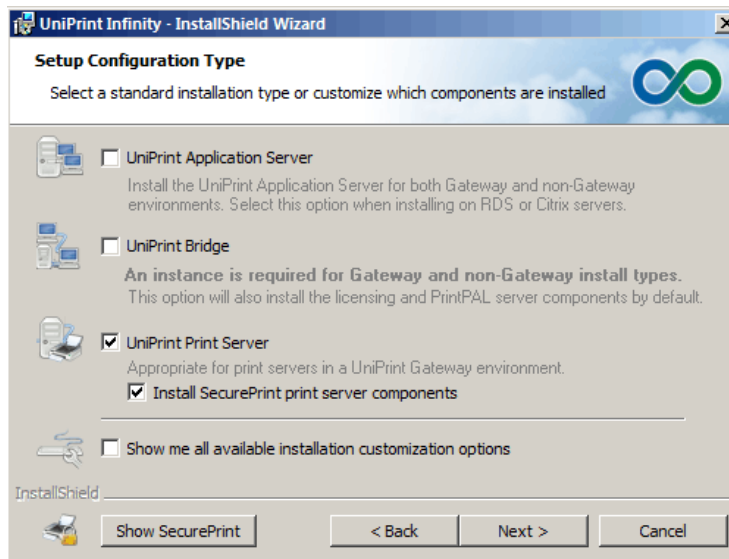
3. In the **License Agreement** dialog box, click **I accept the terms in the license agreement** and then click **Next**.



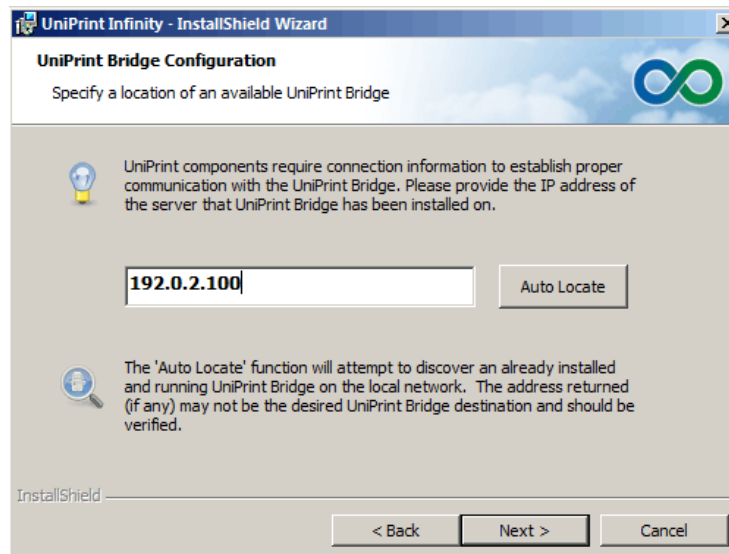
4. In the **Destination Folder** dialog box, click **Next** to accept the default location for the UniPrint program files. Click **Change** to select a different location.



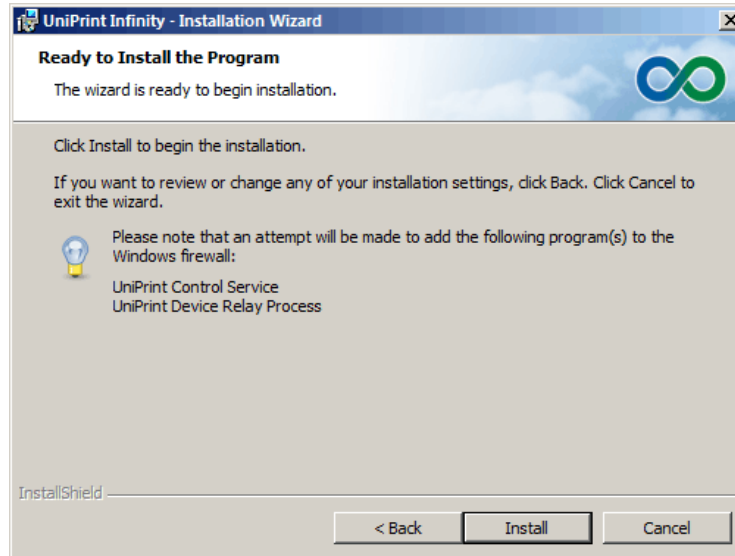
- In the **Setup Configuration Type** dialog box, select **UniPrint Print Server** and **Install UniPrint SecurePrint print server components** and then click **Next**.



- In the **UniPrint Bridge Configuration** dialog box, enter the **IP Address** of the UniPrint Bridge (License Server) and then click **Next**.



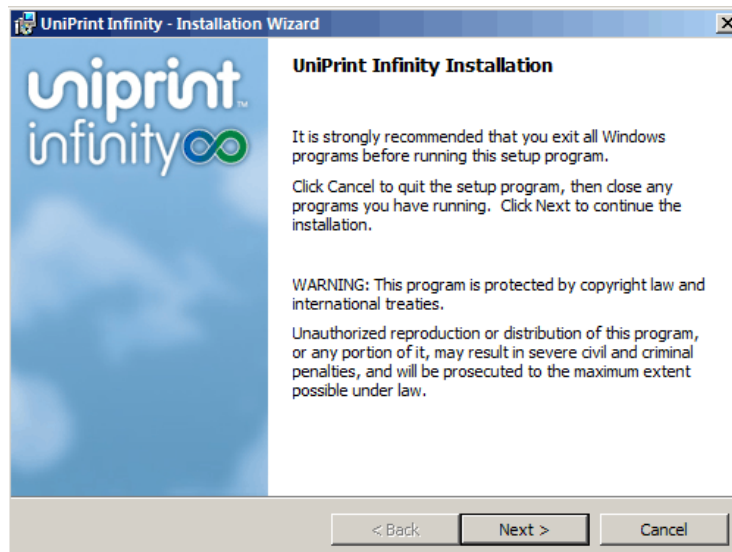
- In the **Ready to Install the Program** dialog box, click **Install**. The UniPrint installer will copy files to the destination folder.



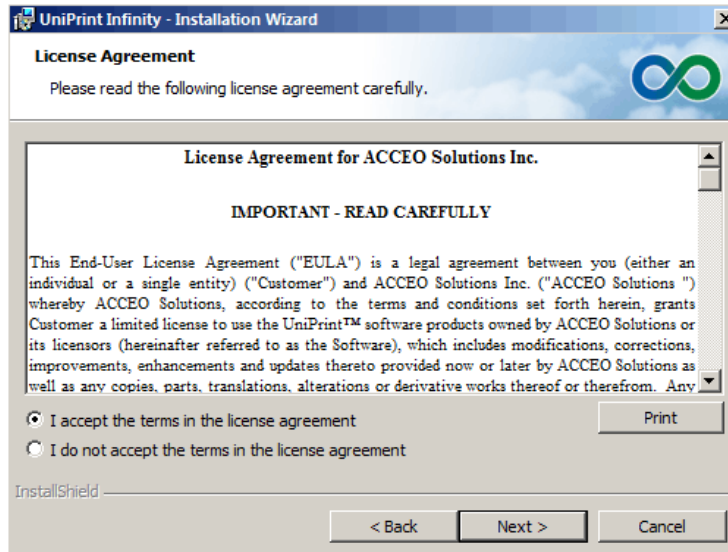
- Click **Finish** to complete the installation.

STEP 3: Install UniPrint Application Server

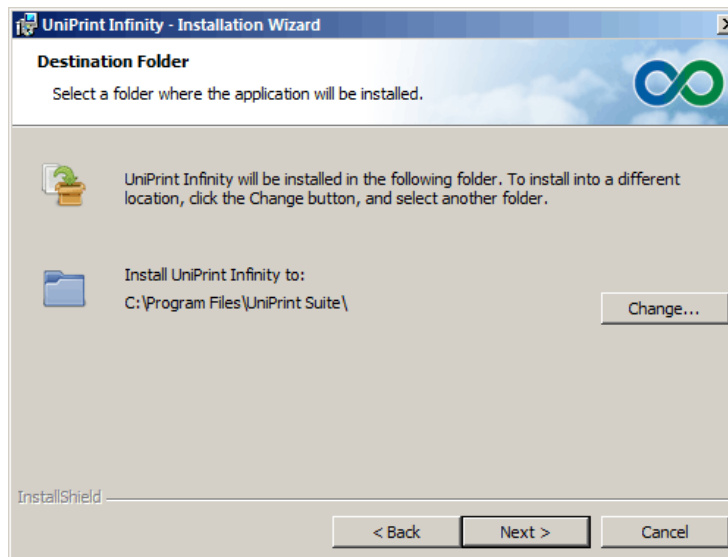
- On Server 3, run the installation program **Setup.exe** as an administrator.
- In the **UniPrint Infinity Installation** dialog box, click **Next**.



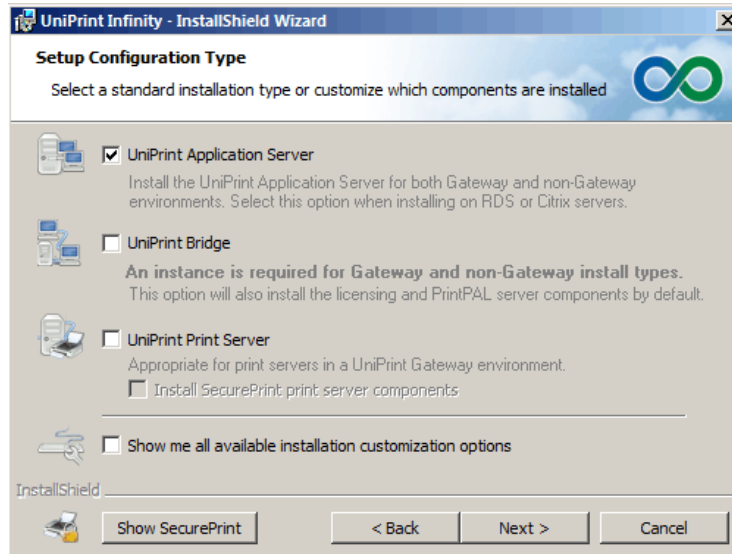
3. In the **License Agreement** dialog box, click **I accept the terms in the license agreement** and then click **Next**.



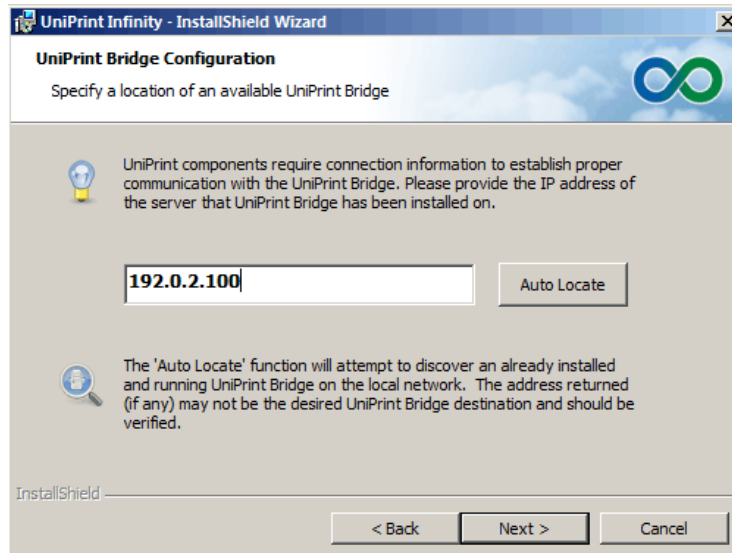
4. In the **Destination Folder** dialog box, click **Next** to accept the default location for the UniPrint program files. Click **Change** to select a different location.



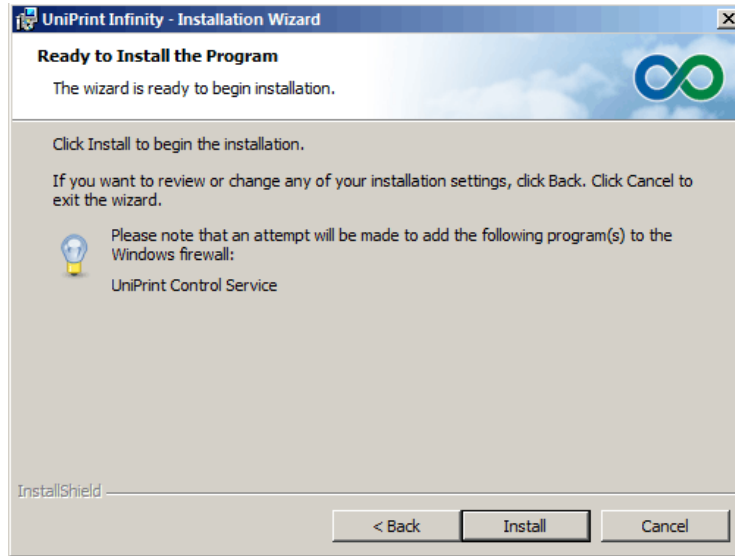
5. In the **Setup Configuration Type** dialog box, select **UniPrint Application Server** and then click **Next**.



6. In the **UniPrint Bridge Configuration** dialog box, enter the **IP Address** of the UniPrint Bridge (License Server) and then click **Next**.



7. In the **Ready to Install the Program** dialog box, click **Install**. The UniPrint installer will copy files to the destination folder.

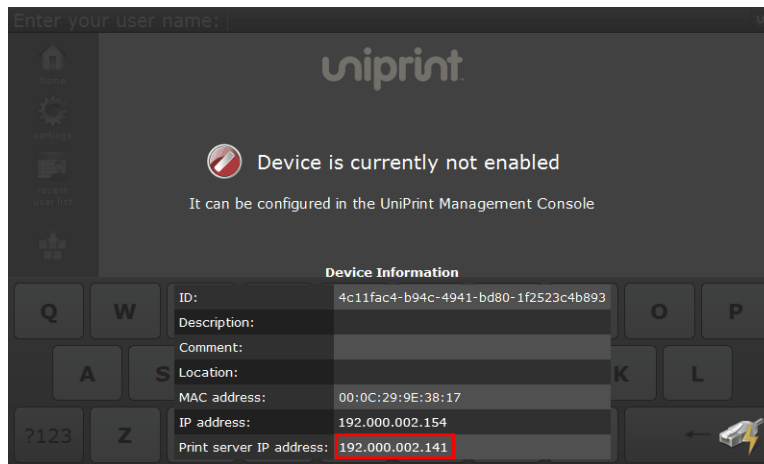


8. Click **Finish** to complete the installation.

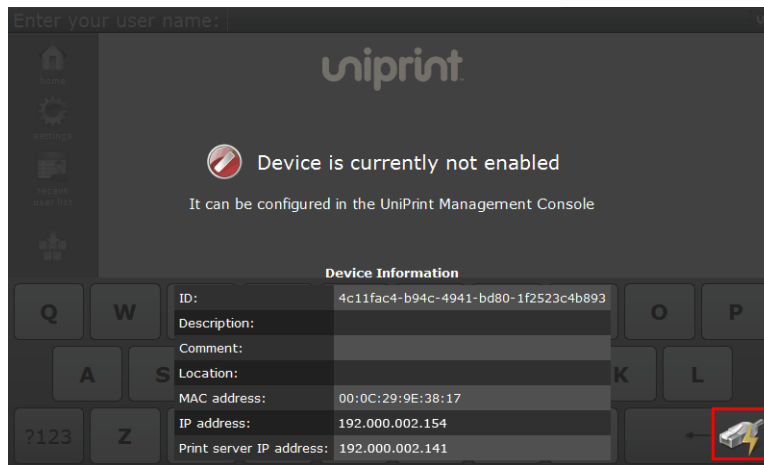
STEP 4: Install and Activate the SecurePrint Emulator

The SecurePrint Emulator can be run from any Windows machine. It does not have to be server-class, a client machine is acceptable. However, the machine must be connected to your network and visible to the UniPrint Print Server (Server 2).

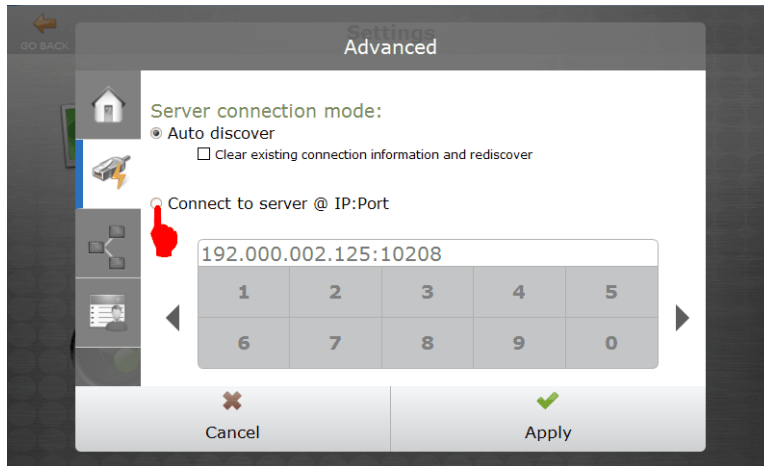
1. On a workstation, run the self-extracting executable file, **SecurePrint Emulator.exe** as an administrator.
2. Ensure that the vPad or emulator is connected to the correct UniPrint Print Server.



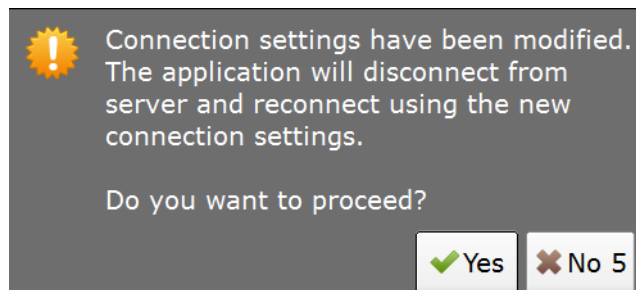
- a. If the **Print Server IP address** is pointing to the wrong UniPrint Print Server, tap **Settings**.



- b. Tap **Connect to Server @ IP:Port** and then change the IP address and port number to that of the desired UniPrint Print Server and then tap **Apply**.

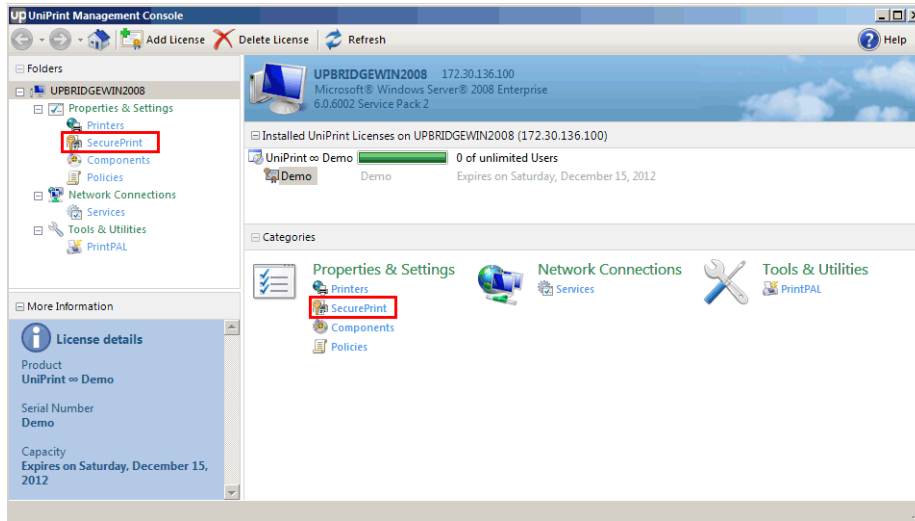


- c. Tap **Yes**.

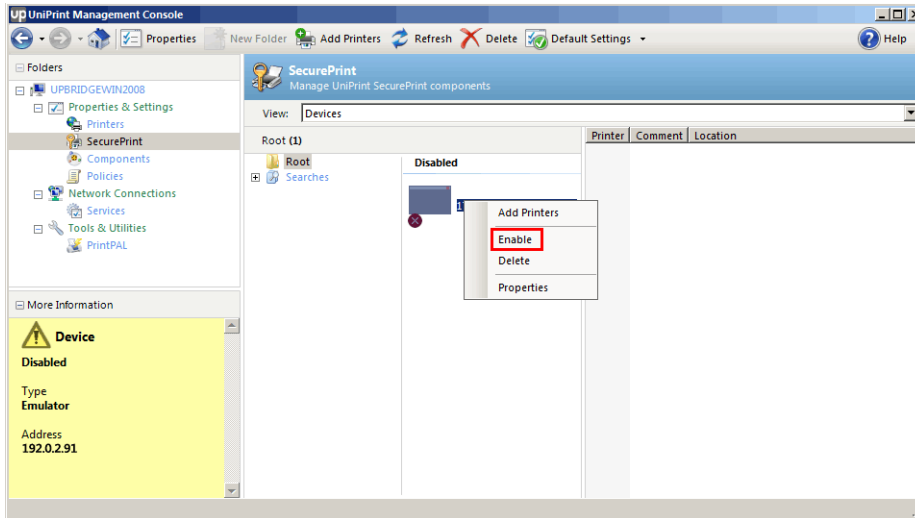


3. On the UniPrint Bridge, click **Start**, click **All Programs**, click **UniPrint Suite** and then click **UniPrint Management Console**.

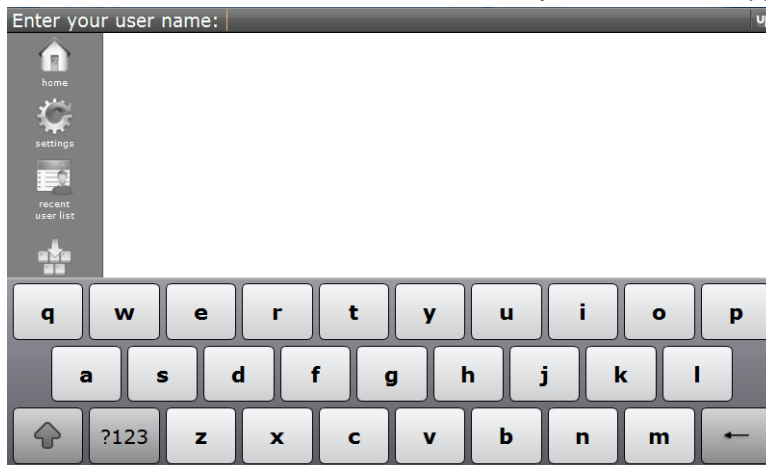
- Under **Properties & Settings**, click **SecurePrint**.



- Right-click the vPad or emulator device and then select **Enable**.

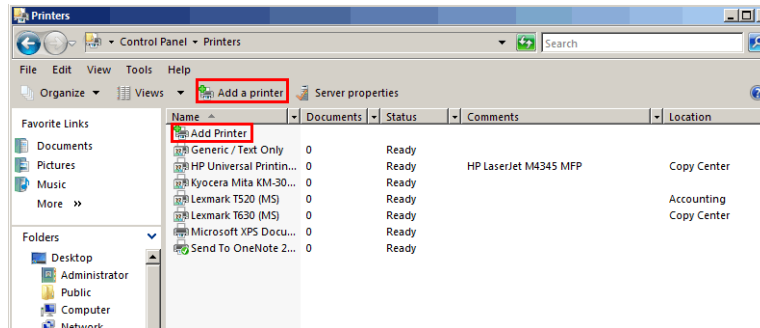


- Once enabled, return to the vPad or emulator and the user name entry screen should appear.

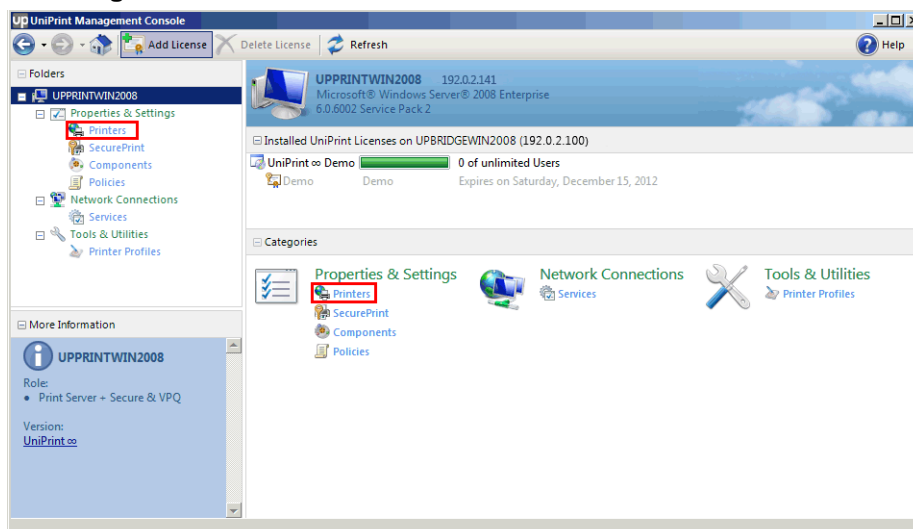


STEP 5: Install a Test Printer On The UniPrint Print Server

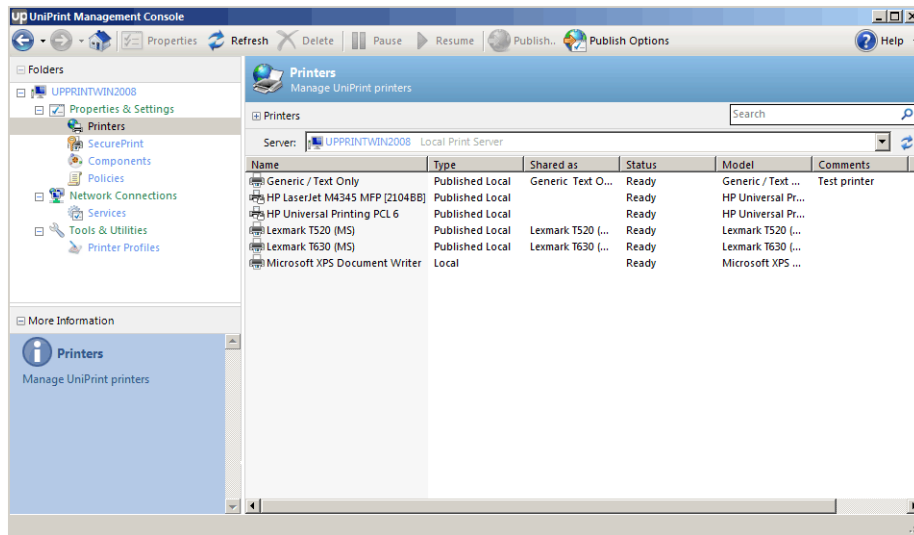
1. On the UniPrint Print Server (Server 2), click **Start**, click **Control Panel** and then double-click **Printers**.
2. Click either **Add a printer** or **Add Printer** and then follow the printer manufacturer's instructions for installing their printer driver.



3. Click **Start**, click **All Programs**, click **UniPrint Suite** and then click **UniPrint Management Console**.
4. Under **Properties & Settings**, click **Printers**.

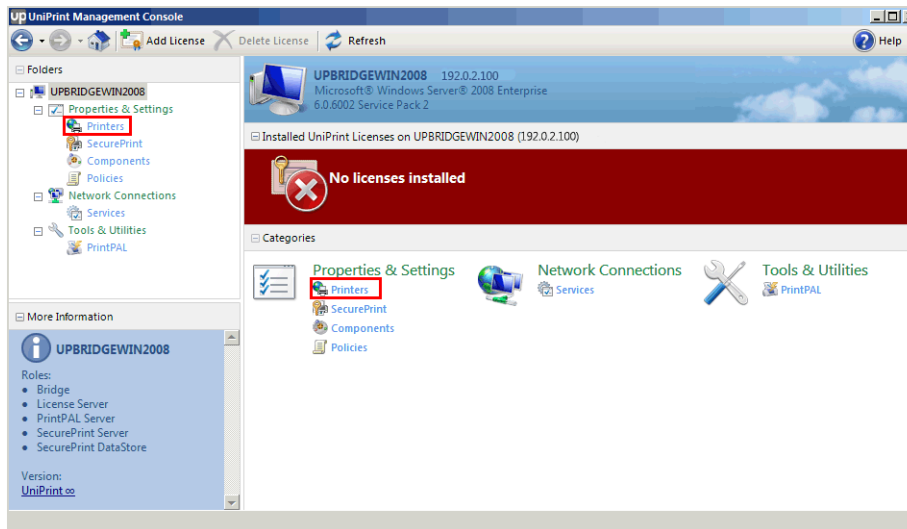


5. Ensure that the test printer appears as type **Published Local**.

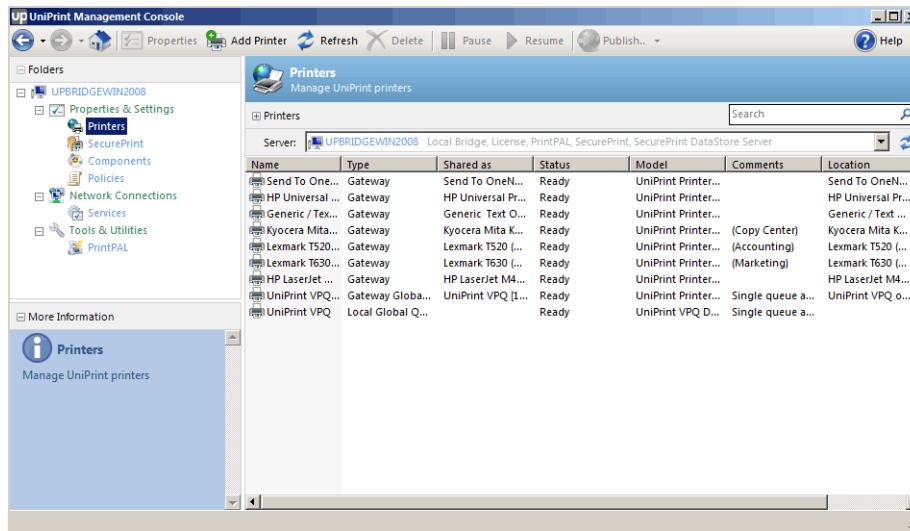


6. On the UniPrint Bridge, open the **UniPrint Management Console**.

7. Under **Properties & Settings**, click **Printers**.

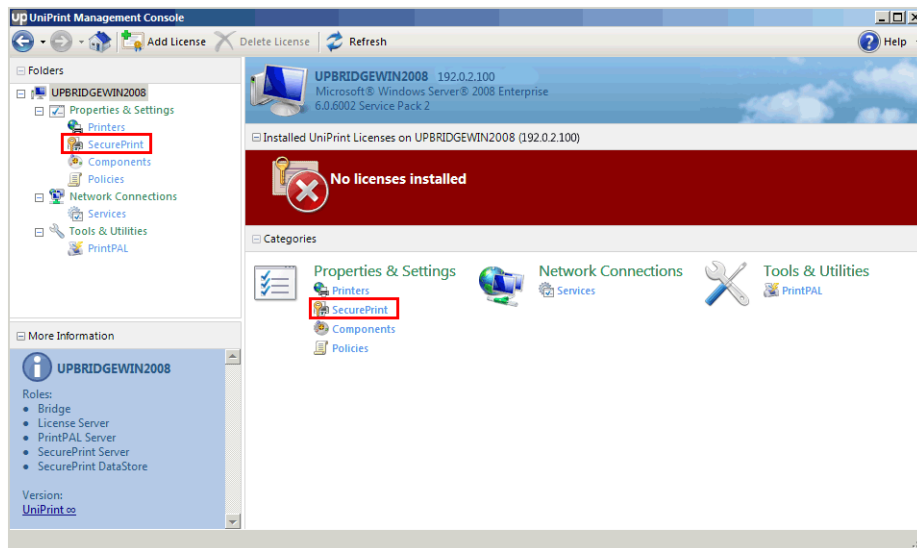


8. The new printer will appear in the printer list of type **Gateway**.

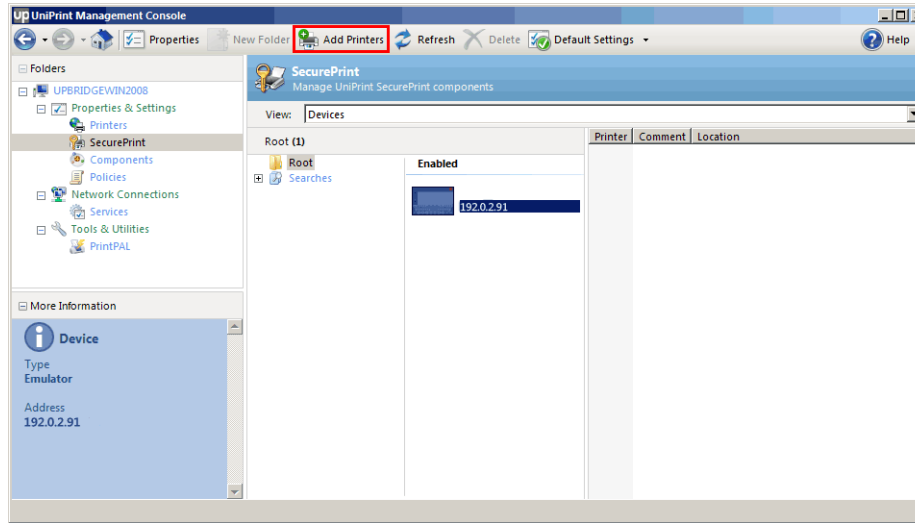


STEP 6: Add Printers to the vPad or Emulator

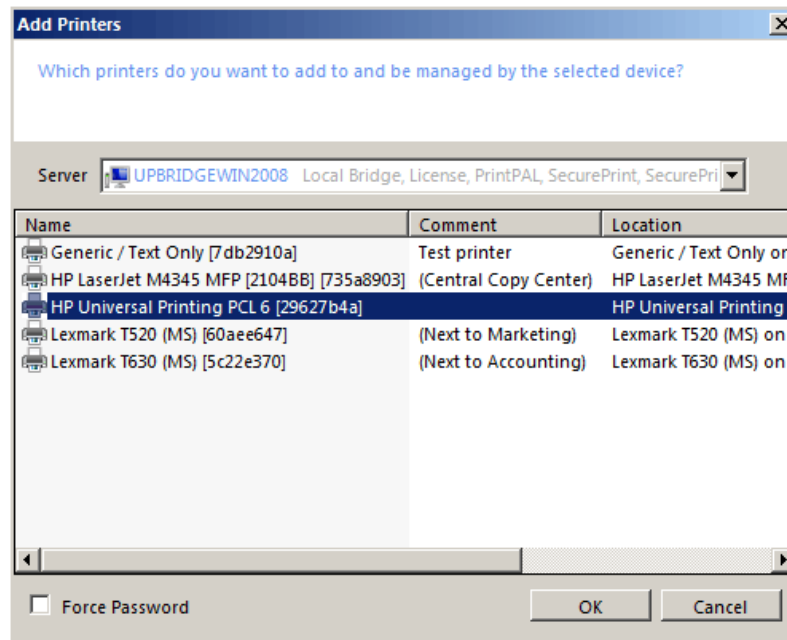
1. On the UniPrint Bridge (Server 1), click **Start**, click **All Programs**, click **UniPrint Suite** and then click **UniPrint Management Console**.
2. Under **Properties & Settings**, click **SecurePrint**.



- Click to select the enabled vPad or emulator and then click **Add Printers**.



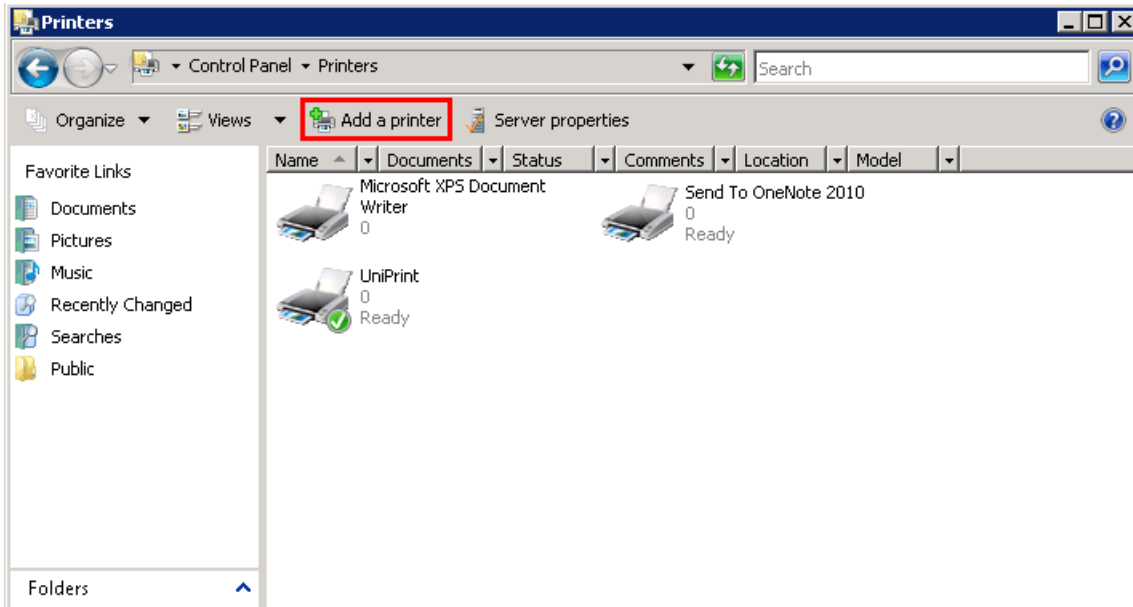
- Click to select a printer and then select **Force Password** to make users enter a password in order to release their print job(s). **Note:** To select multiple printers, click to select a printer and then hold down the **SHIFT** key for consecutive printers or the **CTRL** key for non-consecutive printers. Click **OK**.



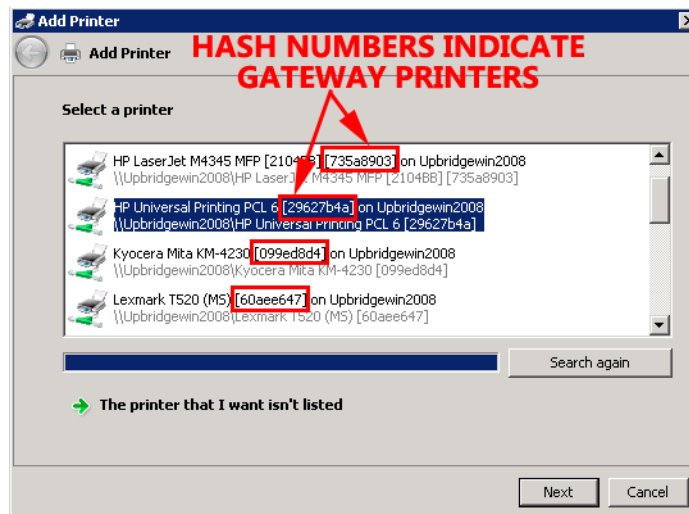
STEP 7: Add the Test Printer and UniPrint VPO In A User Session

- From the workstation, log onto the application server as you normally would through RDP or ICA to access applications.
- Click **Start**, click **Control Panel** and then double-click **Printers**.

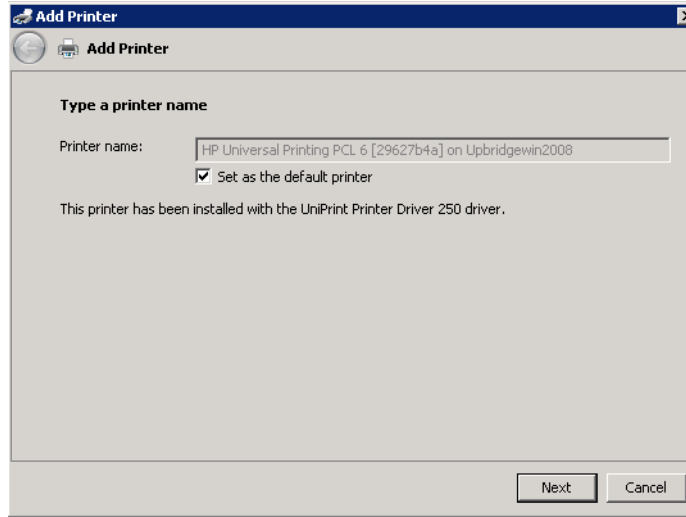
3. Click Add a Printer.



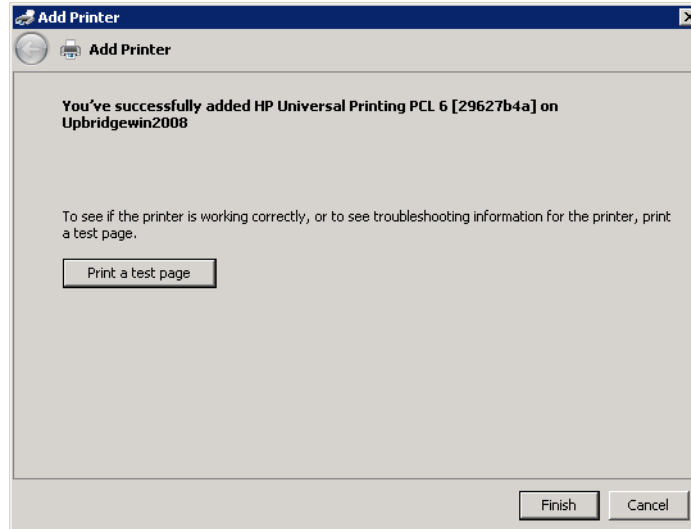
4. Click to select a Gateway printer and then click **Next**. Hash numbers are used to ensure that each Gateway printer is unique and for users they are good indicators that the printer is indeed a Gateway printer.



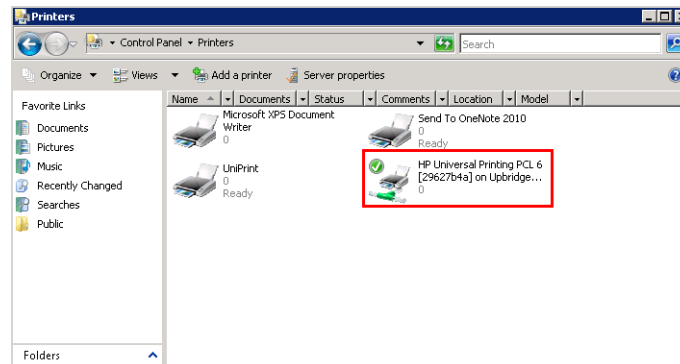
- If you want this printer to be set as the default, select **Set as default printer** and then click **Next**.



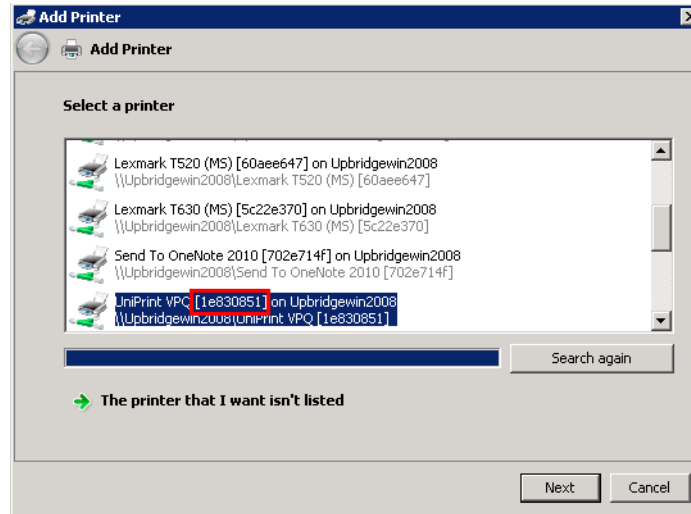
- Click **Finish**.



- The Gateway printer is now added to the session and is available for printing.

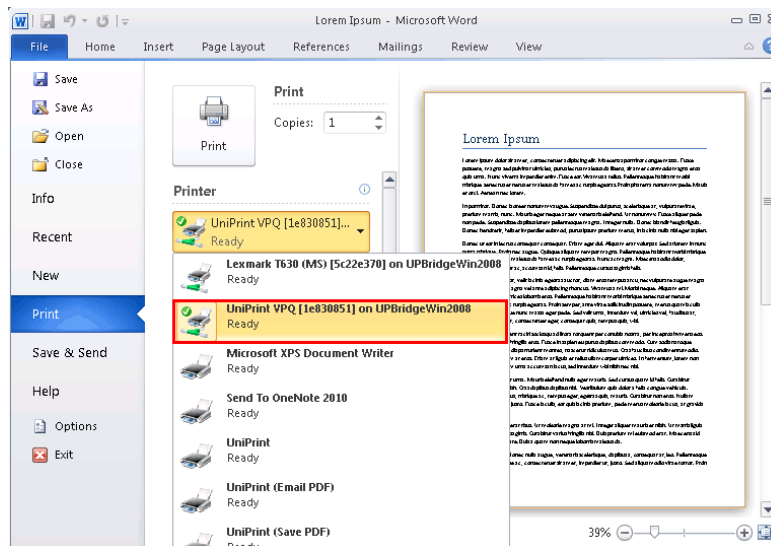


8. Repeat steps 3 to 6 by adding the **UniPrint VPQ** (virtual print queue). The UniPrint VPQ will also have a hash number associated with it. By adding the UniPrint VPQ, you will be able to fully test SecurePrint.

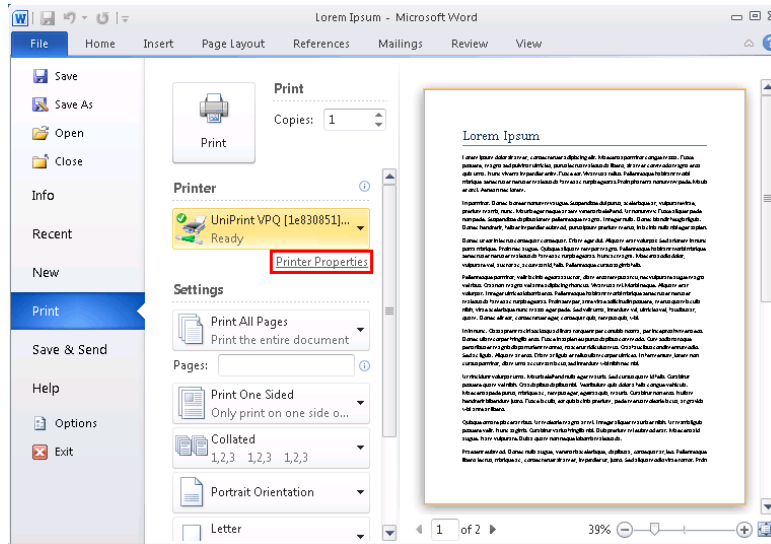


Printing From An ICA/RDP Session to the UniPrint VPQ

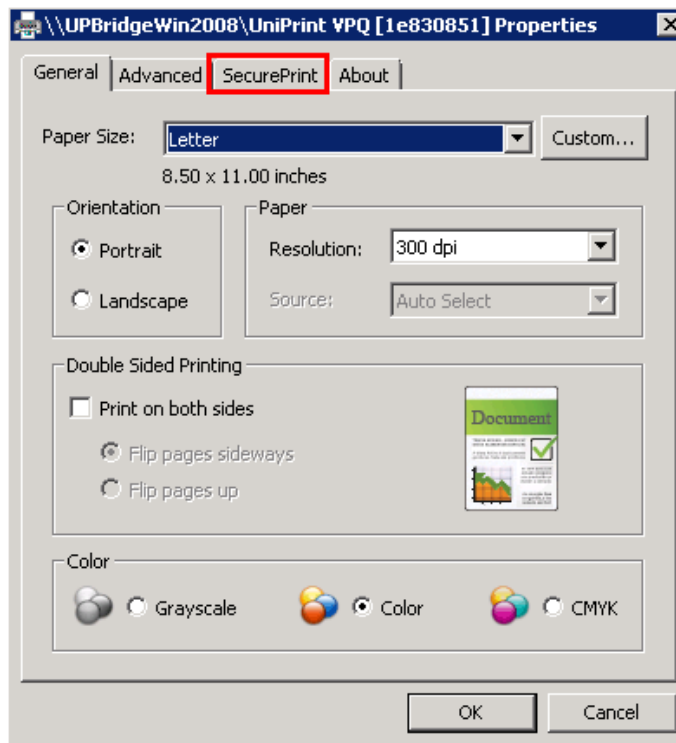
1. From the workstation, launch an ICA/RDP session by logging onto the application server as you normally would to access applications.
2. Open an application from which to print, for example, Microsoft Word.
3. Print from the application. For example in Microsoft Word 2010, in the **File** menu, click **Print**.
4. Select the **UniPrint VPQ** printer (one with hash numbers).



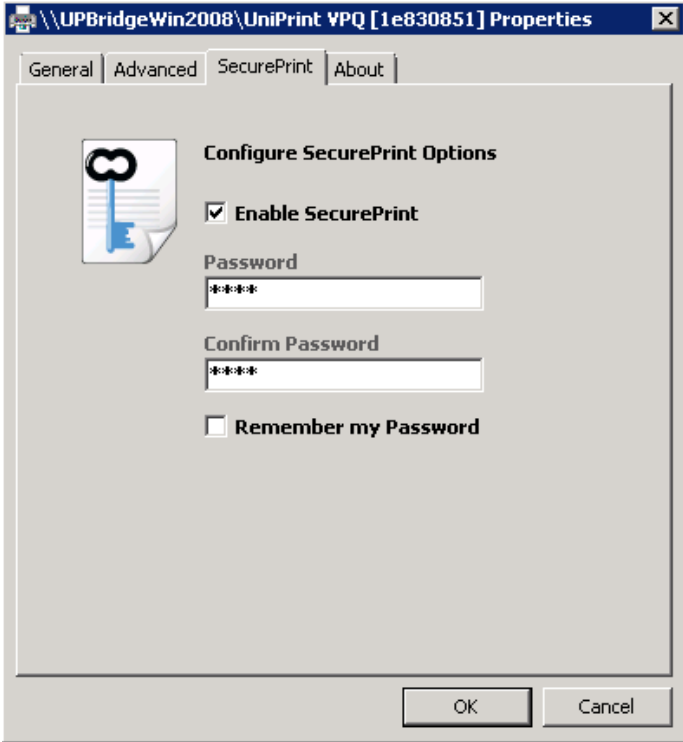
5. Click Printer Properties.



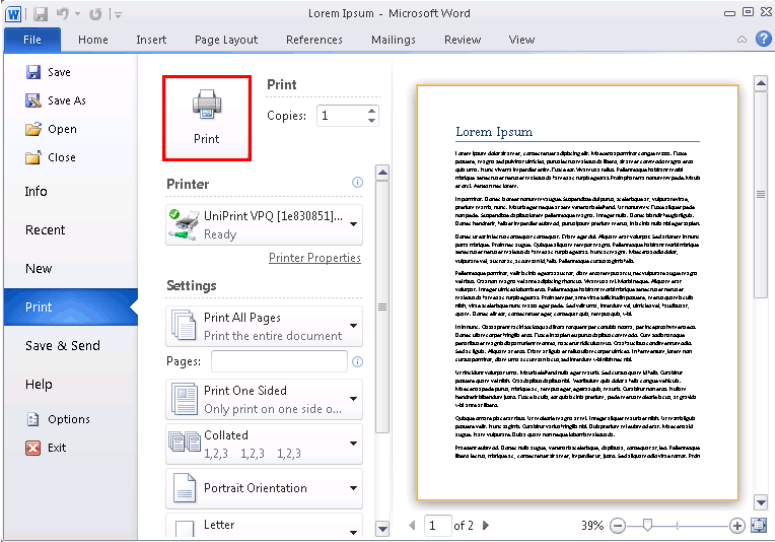
6. Click the SecurePrint tab.



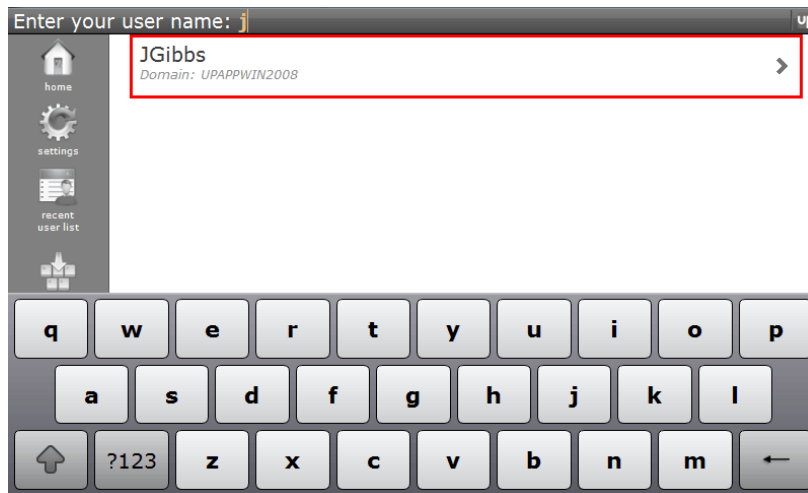
7. Select **Enable SecurePrint** and enter a password twice. Click **OK**.



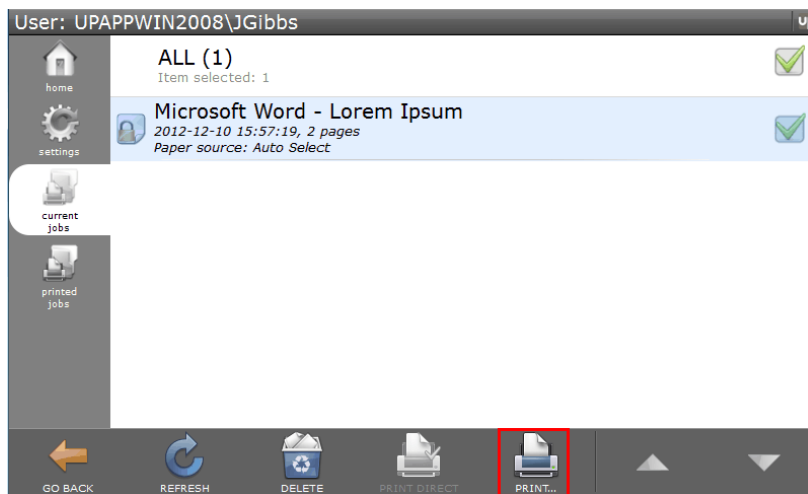
8. Click **Print**.



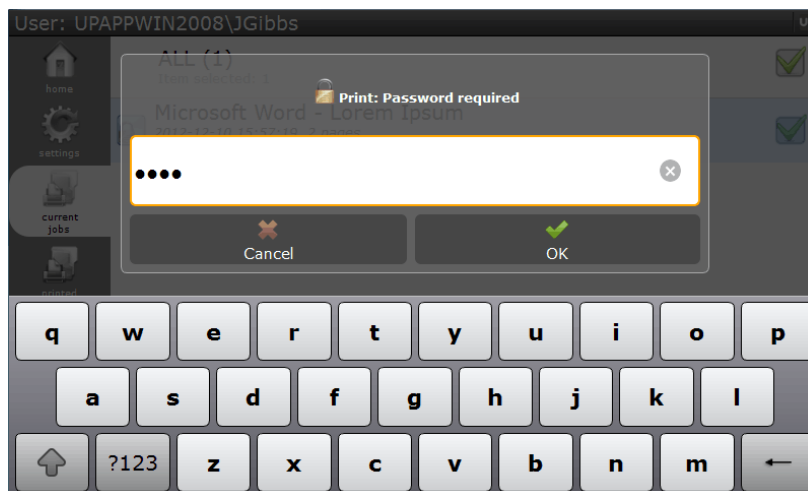
- On the SecurePrint emulator or vPad device, enter your user name and then tap your user name.



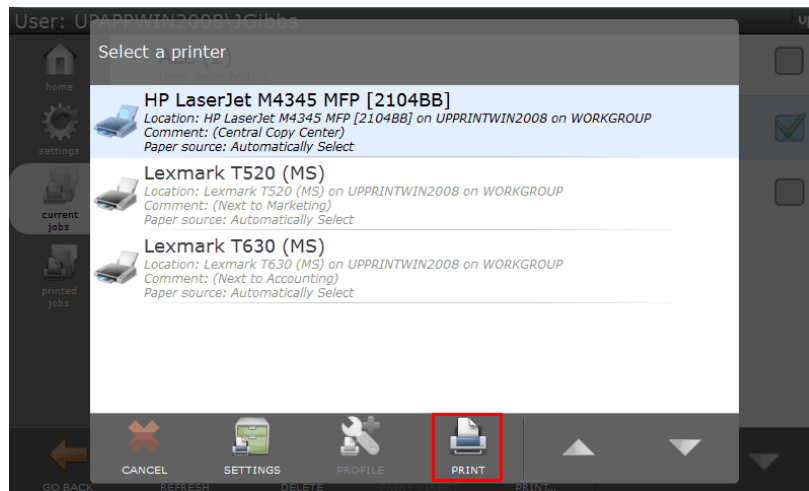
- Tap to select your print job and then tap **Print**. *Note: If UniPrint VPQ is selected, tap **Print** to select a printer to direct your print job to. If a Gateway printer is selected, you can either tap **Print Direct**, which will direct the print job to the Gateway printer or tap **Print** to select a different printer.*



- Enter your password and then tap **OK**.



12. Tap to select a printer and then tap **Print**.



13. The document will be printed with a watermark across each page. To remove this watermark, contact sales@uniprint.net to request a demo license.

