



# **Quick Start Guide**

## **For Virtual Desktop Infrastructure**

**Released: February 2013**  
**Version: 8.1**

Revised: August 12, 2013 11:25 am

# Copyright Notice

UniPrint, a division of ACCEO Business Solutions, Inc. and its affiliates, makes no representations or warranties with respect to the contents or use of this publication. UniPrint, a division of ACCEO Business Solutions, Inc. specially disclaims any expressed or implied warranties, merchantability or fitness for any particular purpose. UniPrint, a division of ACCEO Business Solutions, Inc. reserves the right to make any changes in specifications and other information contained in this publication without prior notice and without obligation to notify any person or entity of such revisions or changes.

© Copyright 1999 - 2013 UniPrint, a division of ACCEO Business Solutions, Inc. All rights reserved.

Information in this document is subject to change without notice. Companies, names and data used in examples herein are fictitious unless otherwise noted. Other than printing one copy for personal use, no part of this document may be reproduced or transmitted in any form or by any means, electronic or mechanical, for any purposes, without the expressed written consent of:

UniPrint, a division of ACCEO Business Solutions, Inc.  
1 Eva Road, Suite 309  
Toronto, Ontario  
Canada M9C 4Z5  
(416) 503-9800  
Toll Free: (866) 488-3188 (North America only)  
[www.uniprint.net](http://www.uniprint.net)

# Trademark Acknowledgements

UniPrint is a trademark of UniPrint, a division of ACCEO Business Solutions, Inc. United States Patent No. 7,064,856.

Microsoft, Windows, Windows 2003/2008, Windows XP, Vista, Windows 7, Microsoft Access, Microsoft Word, Remote Desktop Protocol (RDP), ASP.NET and Active Directory are either registered trademarks or trademarks of Microsoft Corporation.

Citrix, MetaFrame, Presentation Server, XenApp and ICA (Independent Computing Architecture) are registered trademarks or trademarks of Citrix Systems.

Adobe, Acrobat, Reader are registered trademarks of Adobe Systems Inc.

All other trademarks and registered trademarks are the property of their owners.

# Table of Contents

- Introduction ..... 1**
- Installation Scenario ..... 1**
  - Recommended System Requirements ..... 1
  - Recommended Installation Procedure ..... 2
- STEP 1: Install UniPrint Bridge ..... 2**
- STEP 2: Install UniPrint Print Server ..... 5**
- STEP 4: Install UniPrint Application Server on a Virtual Desktop Image ..... 8**
- STEP 5: Install a Test Printer On The UniPrint Print Server ..... 11**
- STEP 6: Add the Test Printer In A User Session ..... 14**
- Printing From A Virtual Desktop Image ..... 17**

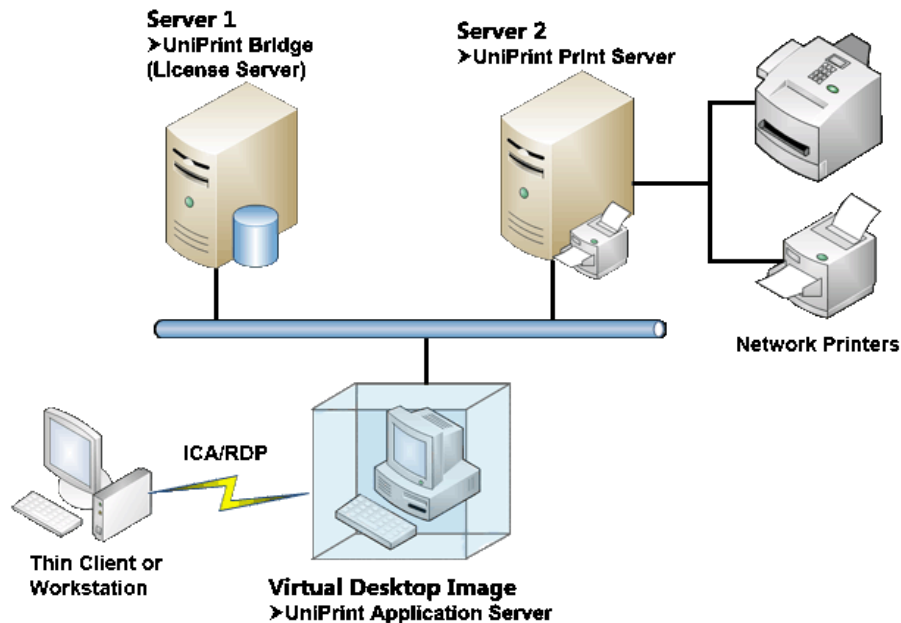


## Introduction

This step-by-step guide is intended for those who want set up UniPrint Infinity with minimal configuration in Virtual Desktop Infrastructure (VDI). Only the necessary steps required to start printing from a virtual desktop image will be covered. For additional assistance on customizing UniPrint Infinity or setting up many of UniPrint Infinity's features such as SecurePrint, PrintPAL, Archiving, Statistics Monitoring and vPad, refer to the [UniPrint Infinity Administrator's Guide](#).

This quick start guide is specific to a VDI environment. All components, with the exception of SecurePrint, Archiving and Statistics, will be installed such that full testing can be performed. However, only instructions on printing from a virtual desktop image will be presented.

## Installation Scenario



This scenario requires two servers and a virtual desktop image. The first server will have UniPrint Bridge with the license server installed. The second server will have UniPrint Print Server installed. The virtual desktop image will have UniPrint Application Server installed.

## Recommended System Requirements



**NOTE:** All servers require .NET Framework 3.5. If only .NET Framework 4.0 has been installed, then .NET Framework 3.5 is still required.

**Server 1:** UniPrint Bridge requires one of the following supported operating systems:

- Microsoft Windows Server 2003 SP1
- Microsoft Windows Server 2008 or R2
- Microsoft Windows Server 2012

**Server 2:** UniPrint Print Server requires one of the following supported operating systems:

- Microsoft Windows XP Professional
- Microsoft Windows Vista
- Microsoft Windows 7
- Microsoft Windows 8
- Microsoft Windows Server 2003 SP1
- Microsoft Windows Server 2008 or R2
- Microsoft Windows Server 2012

**Virtual Desktop Image:** UniPrint Application Server requires one of the following supported operating systems:

- Microsoft Windows XP Professional
- Microsoft Windows Vista
- Microsoft Windows 7 (**Note:** *Windows 7 Starter, Home Basic and Home Premium are NOT supported because these versions do not support Remote Desktop Services.*)
- Microsoft Windows 8

## Recommended Installation Procedure



**NOTE:** The following instructions explain how to deploy UniPrint Infinity in a VDI environment using the minimum number of computers. This installation scenario is designed and intended for testing purposes and does not reflect production best practices.

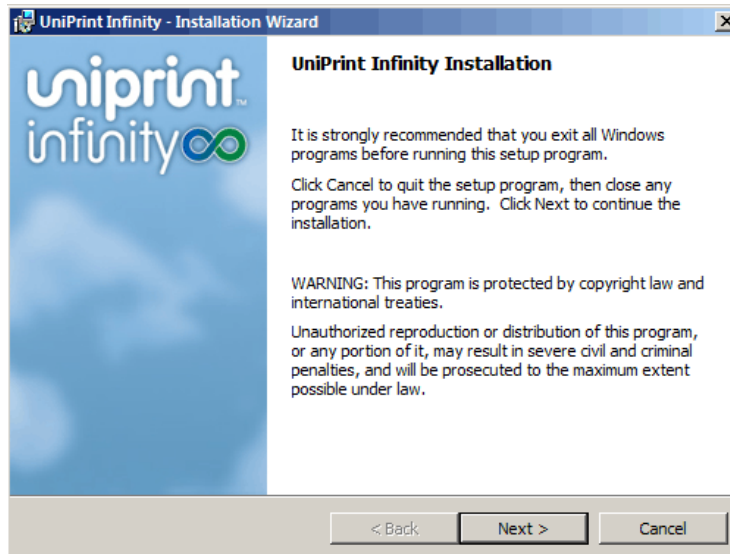
---

1. Install UniPrint Bridge along with the license server on Server 1.
2. Install UniPrint Print Server on Server 2.
3. Install UniPrint Application Server on a virtual desktop image.
4. Install a test printer on the UniPrint Print Server (Server 2).
5. Add the test printer in a virtual desktop image.

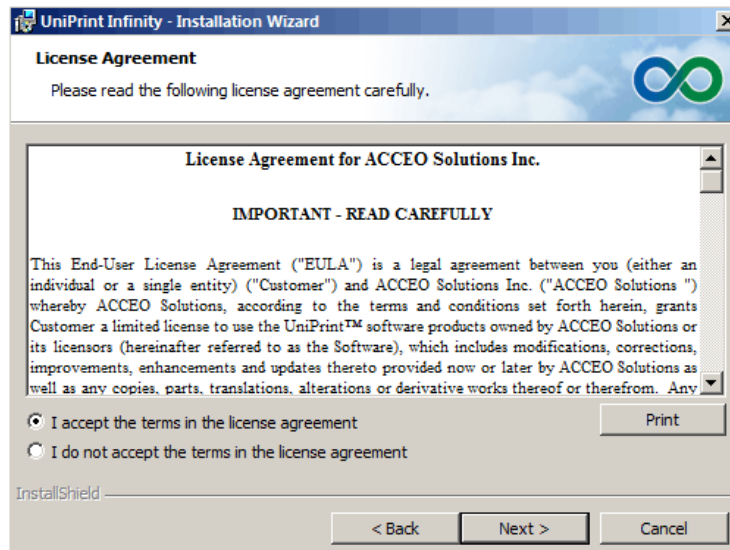
## STEP 1: Install UniPrint Bridge

1. On Server 1, run the installation program **Setup.exe** as an administrator.
2. If running **Setup.exe** with UAC enabled, the **User Account Control** dialog box will appear. Click **Yes** to continue.

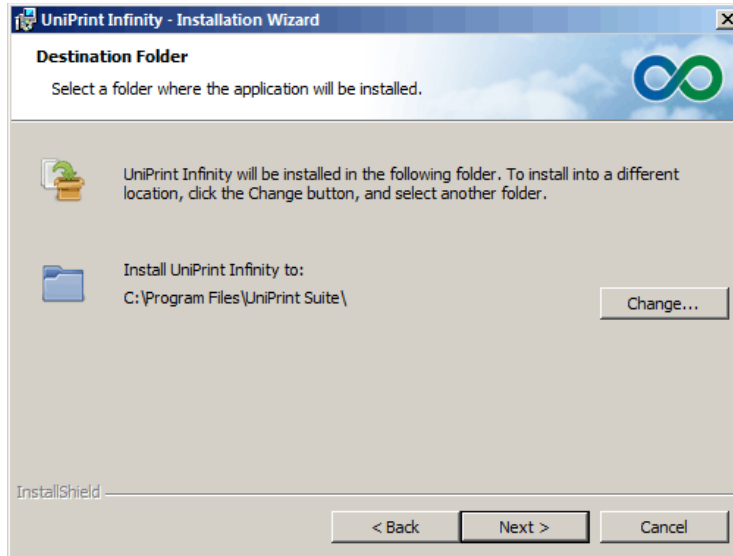
3. In the **UniPrint Infinity Installation** dialog box, click **Next**.



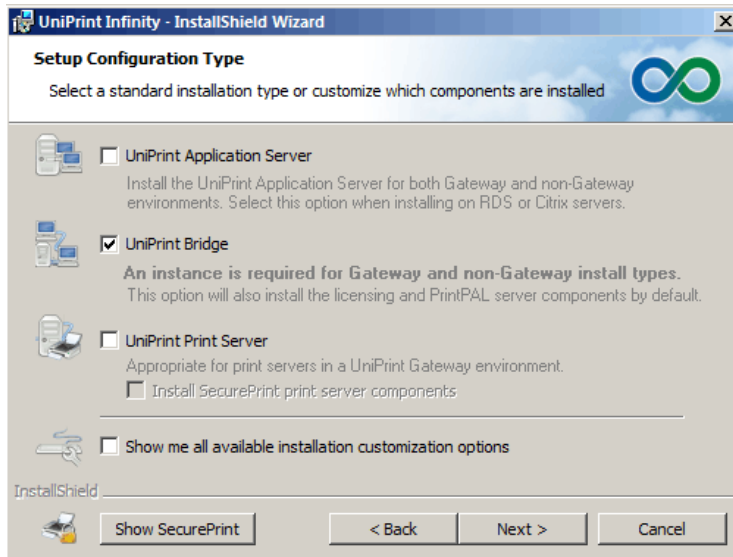
4. In the **License Agreement** dialog box, click **I accept the terms in the license agreement** and then click **Next**.



5. In the **Destination Folder** dialog box, click **Next** to accept the default location for the UniPrint program files. Click **Change** to select a different location.

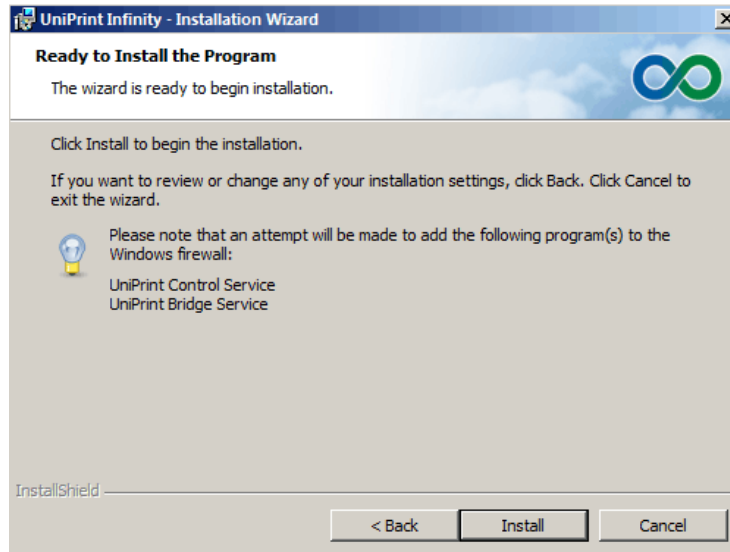


6. In the **Setup Configuration Type** dialog box, select **UniPrint Bridge** and then click **Next**.

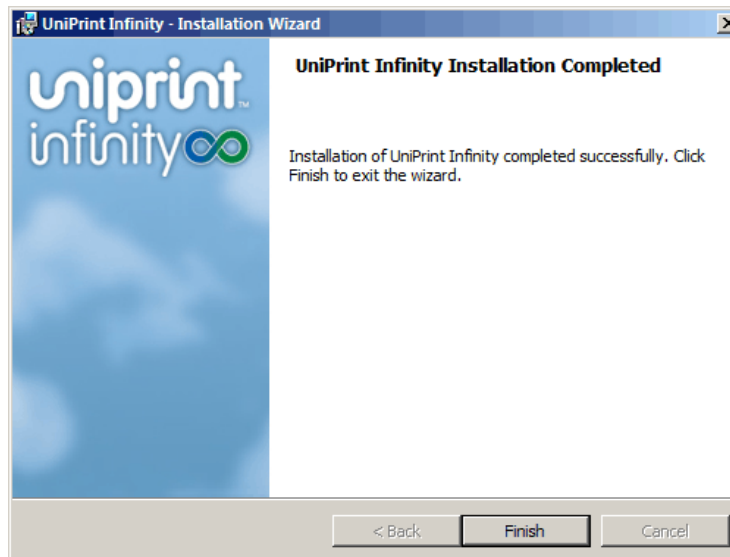




- In the **Ready to Install the Program** dialog box, click **Install**. The UniPrint installer will copy files to the destination folder.



- Click **Finish** to complete the installation.

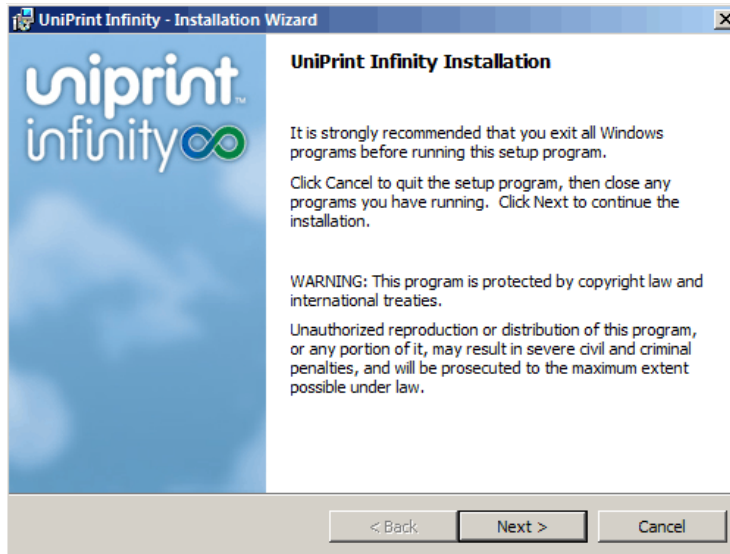


- Record the IP address of this computer.

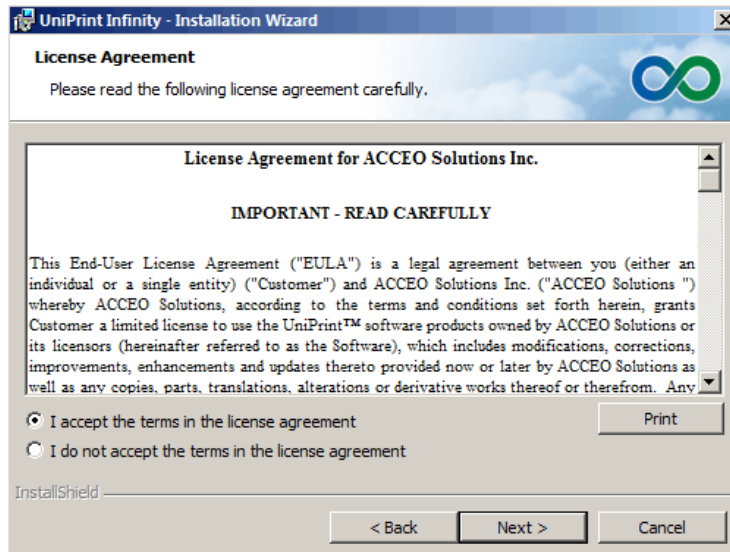
## STEP 2: Install UniPrint Print Server

- On Server 2, run the installation program **Setup.exe** as an administrator.

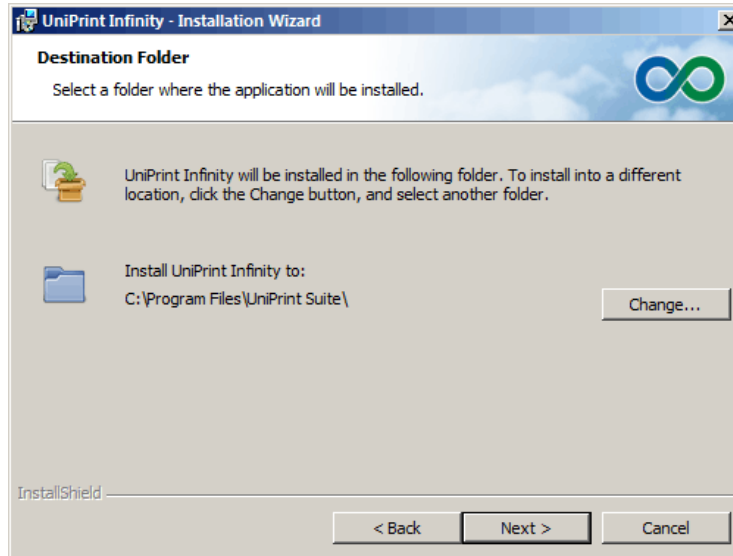
2. In the **UniPrint Infinity Installation** dialog box, click **Next**.



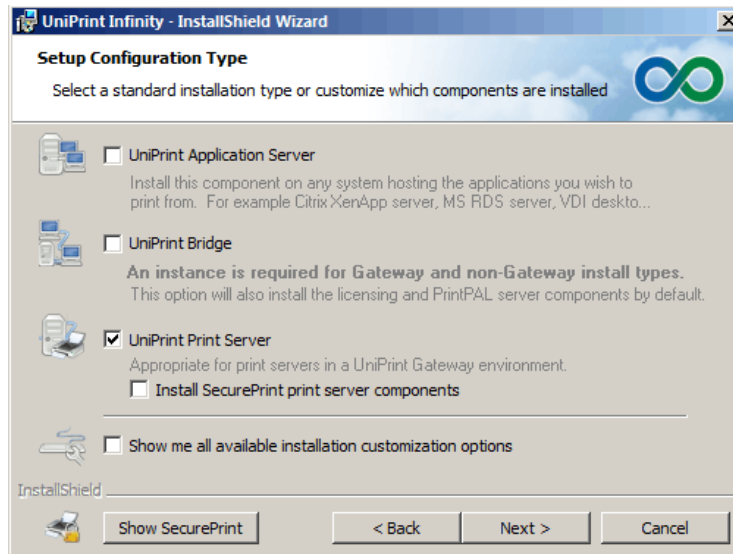
3. In the **License Agreement** dialog box, click **I accept the terms in the license agreement** and then click **Next**.



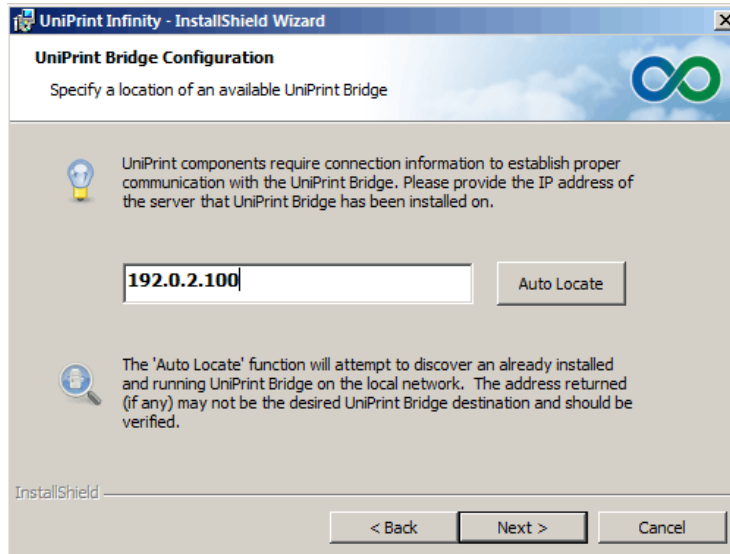
- In the **Destination Folder** dialog box, click **Next** to accept the default location for the UniPrint program files. Click **Change** to select a different location.



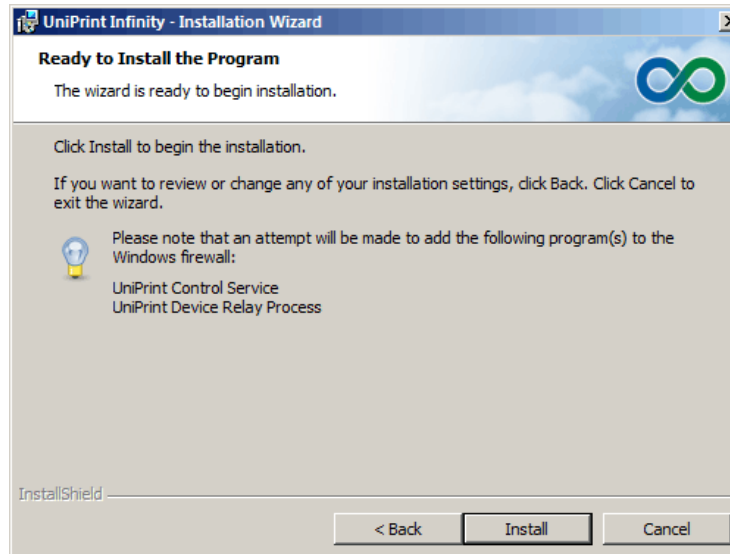
- In the **Setup Configuration Type** dialog box, select **UniPrint Print Server** and then click **Next**.



6. In the **UniPrint Bridge Configuration** dialog box, enter the **IP Address** of the UniPrint Bridge (License Server) and then click **Next**.



7. In the **Ready to Install the Program** dialog box, click **Install**. The UniPrint installer will copy files to the destination folder.

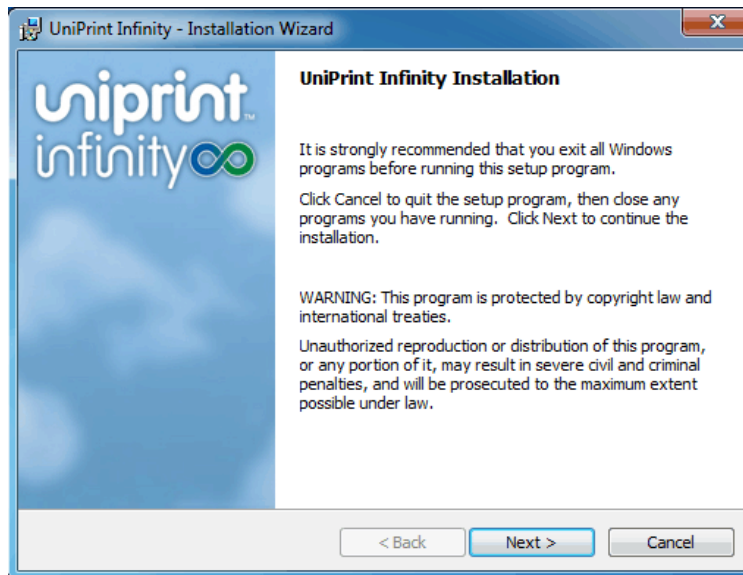


8. Click **Finish** to complete the installation.

## STEP 4: Install UniPrint Application Server on a Virtual Desktop Image

1. On a virtual desktop image, run the installation program **Setup.exe** as an administrator.

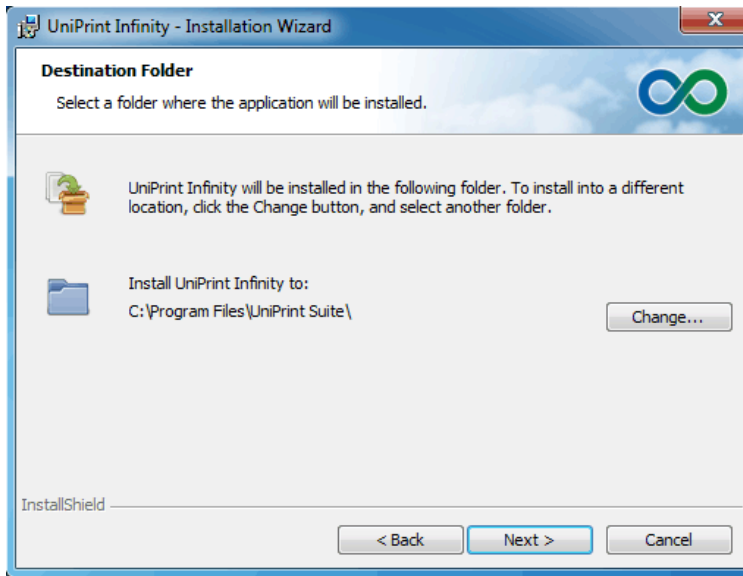
2. In the **UniPrint Infinity Installation** dialog box, click **Next**.



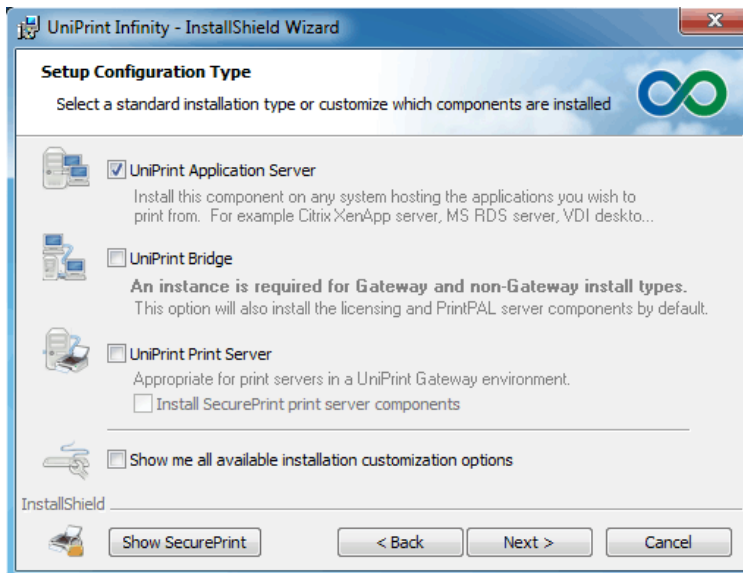
3. In the **License Agreement** dialog box, click **I accept the terms in the license agreement** and then click **Next**.



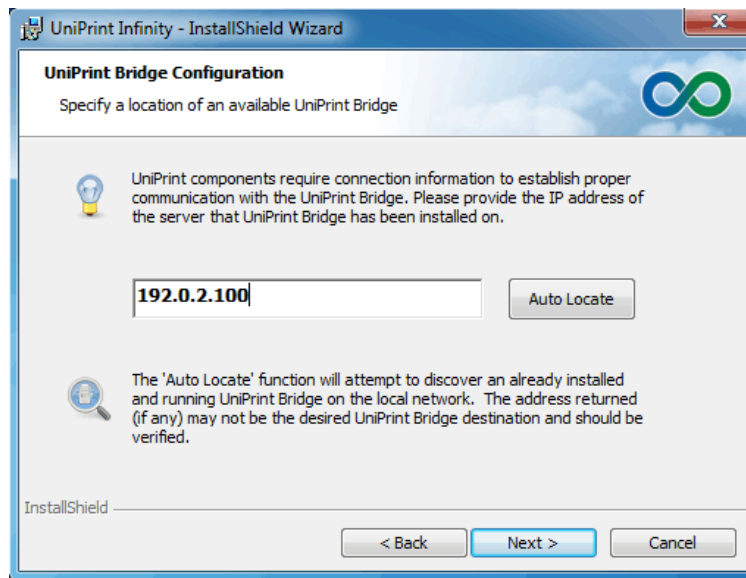
4. In the **Destination Folder** dialog box, click **Next** to accept the default location for the UniPrint program files. Click **Change** to select a different location.



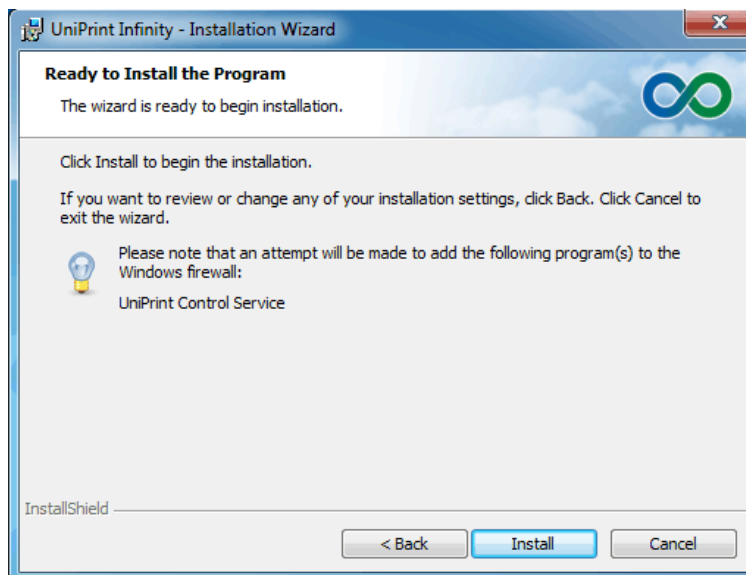
5. In the **Setup Configuration Type** dialog box, select **UniPrint Application Server** and then click **Next**.



6. In the **UniPrint Bridge Configuration** dialog box, enter the **IP Address** of the UniPrint Bridge (License Server) and then click **Next**.



7. In the **Ready to Install the Program** dialog box, click **Install**. The UniPrint installer will copy files to the destination folder.

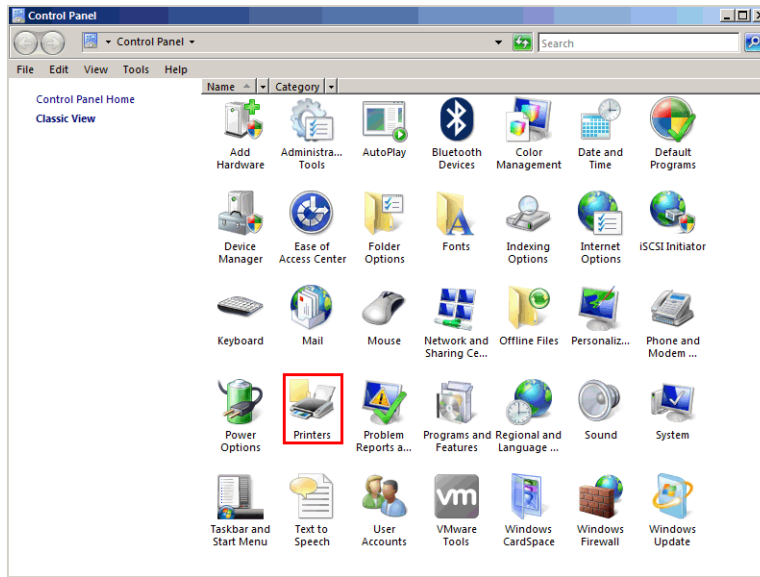


8. Click **Finish** to complete the installation.

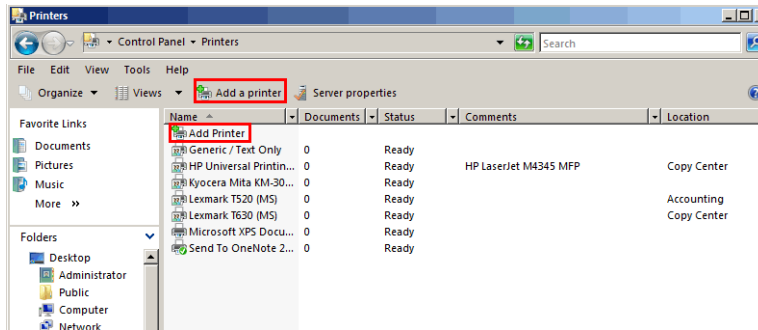
## STEP 5: Install a Test Printer On The UniPrint Print Server

1. On the UniPrint Print Server (Server 2), click **Start** and then click **Control Panel**.

2. Click **Printers**.



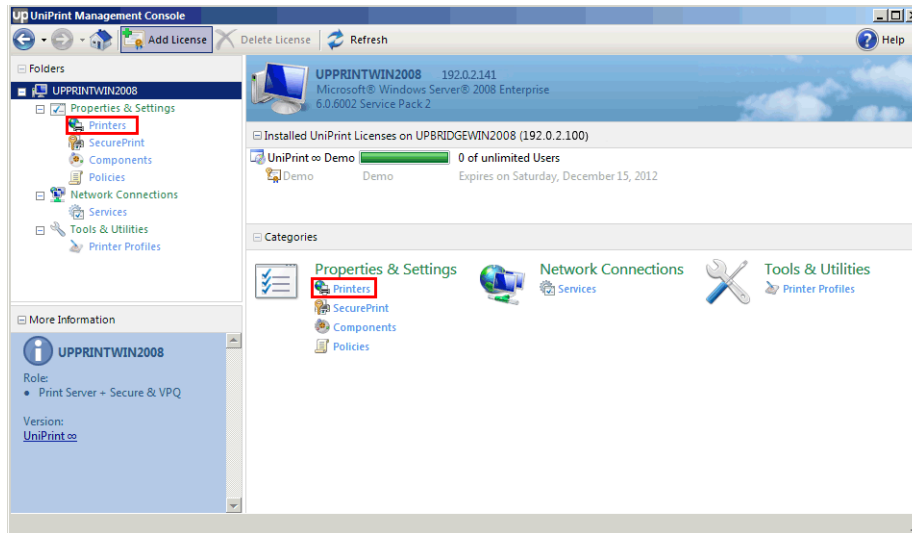
3. Click either **Add a printer** or **Add Printer** and then follow the printer manufacturer's instructions for installing their printer driver.



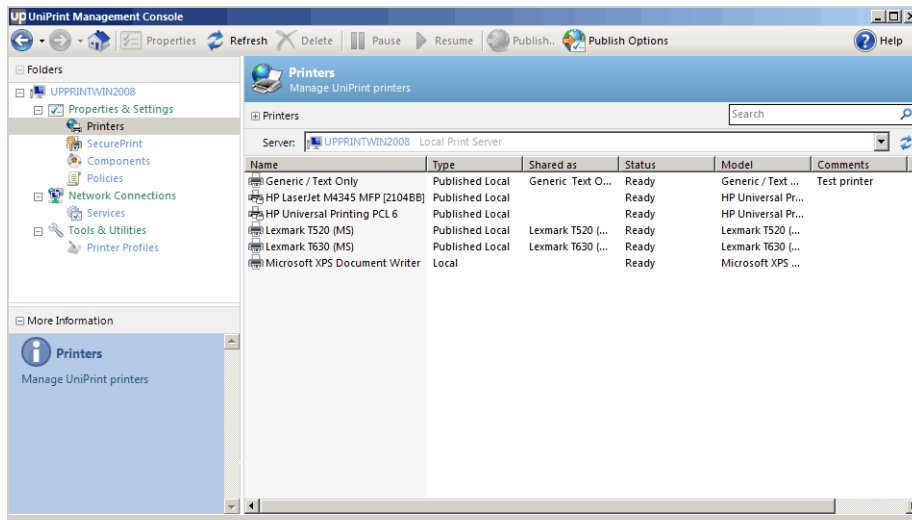
4. Click **Start**, click **All Programs**, click **UniPrint Suite** and then click **UniPrint Management Console**.



5. Under **Properties & Settings**, click **Printers**.

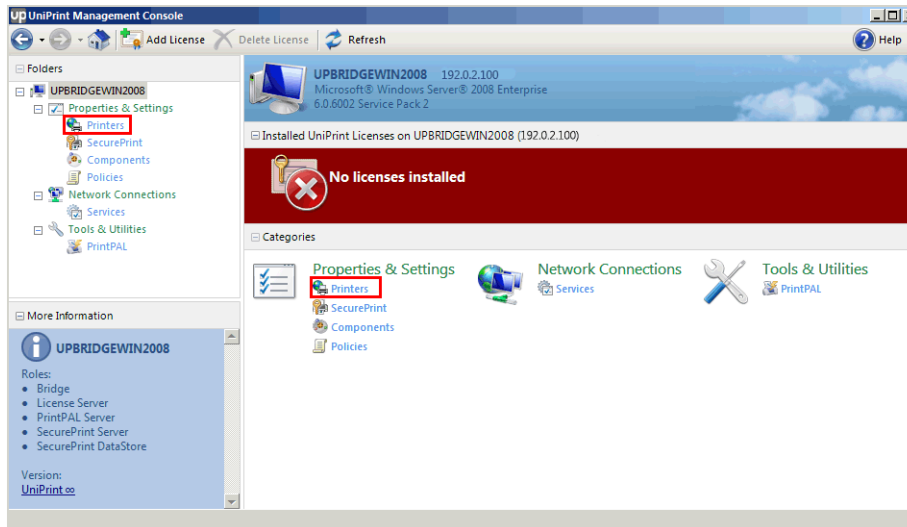


6. Ensure that the test printer appears as type **Published Local**.

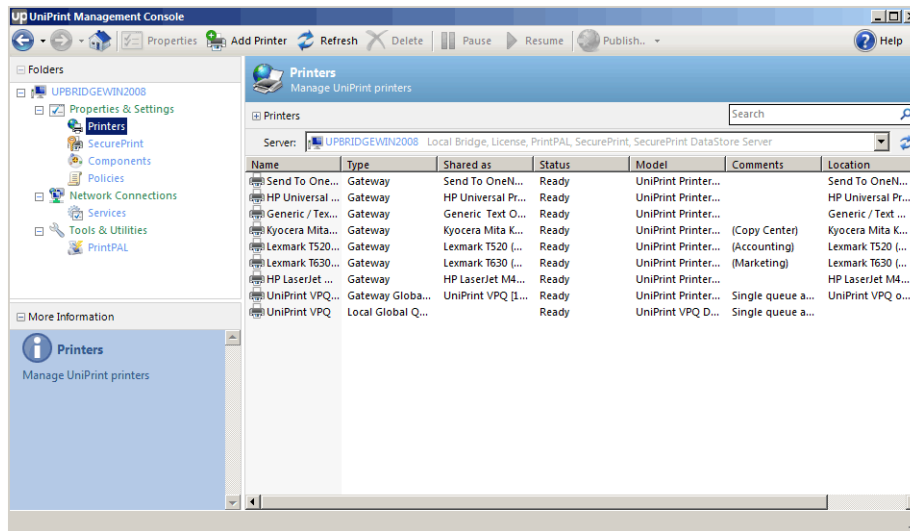


7. On the UniPrint Bridge (Server 1), open the **UniPrint Management Console**.

8. Under **Properties & Settings**, click **Printers**.



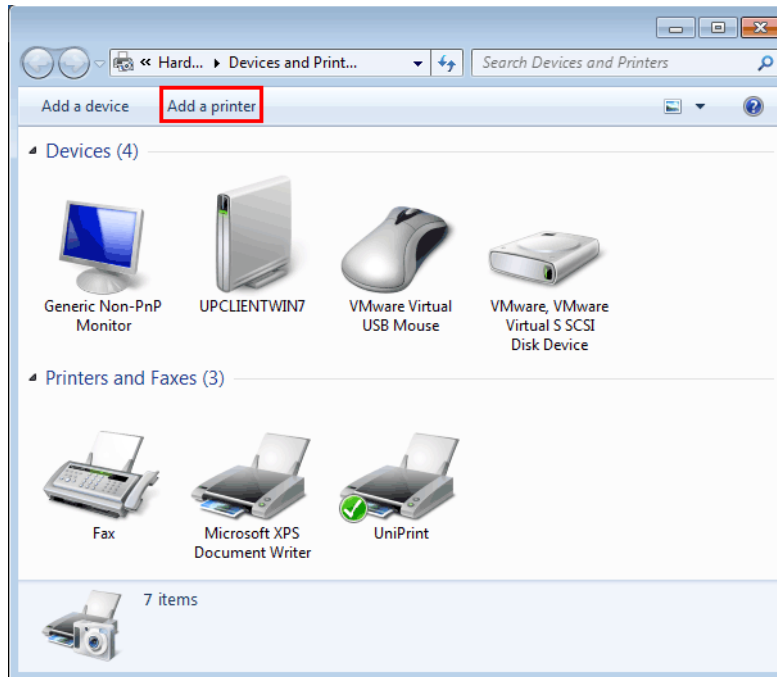
9. The new printer will appear in the printer list of type **Gateway**.



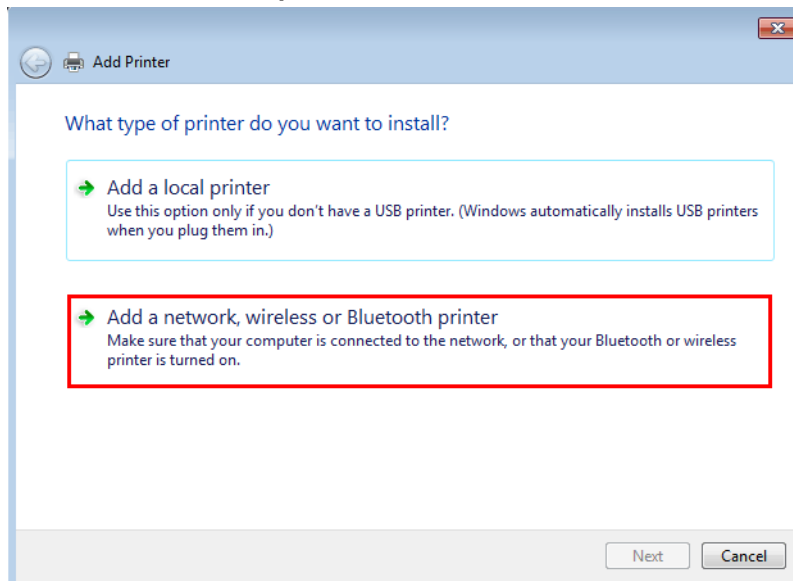
## STEP 6: Add the Test Printer In A User Session

1. Log onto the virtual desktop image as you normally would to access applications.
2. Click **Start** and then click **Devices and Printers**.

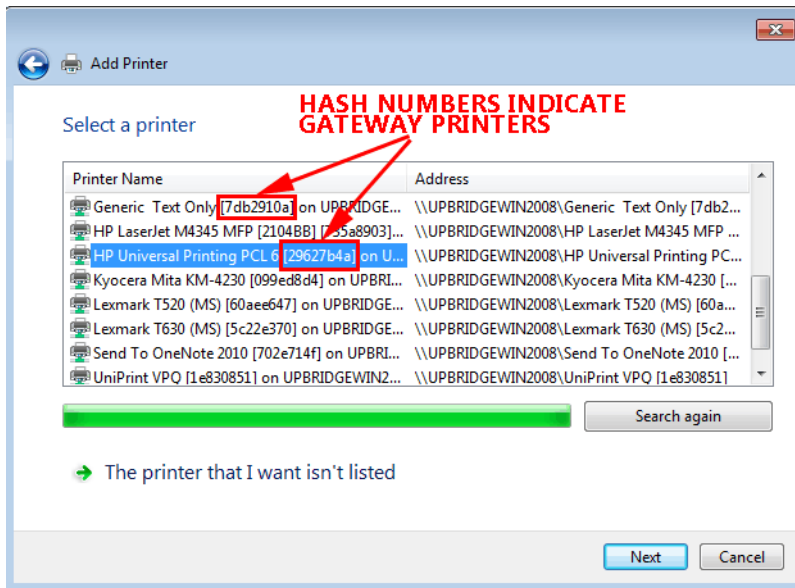
3. Click **Add a printer**.



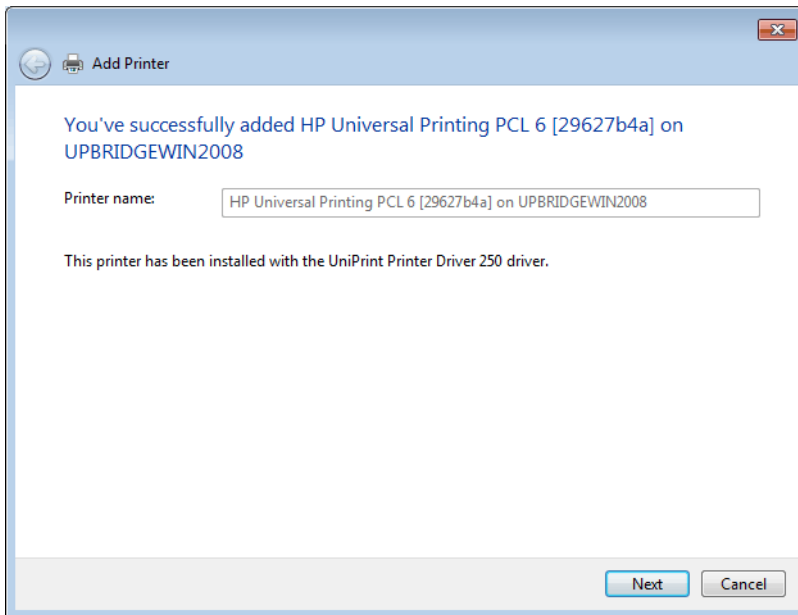
4. Click **Add a network, wireless or Bluetooth printer**.



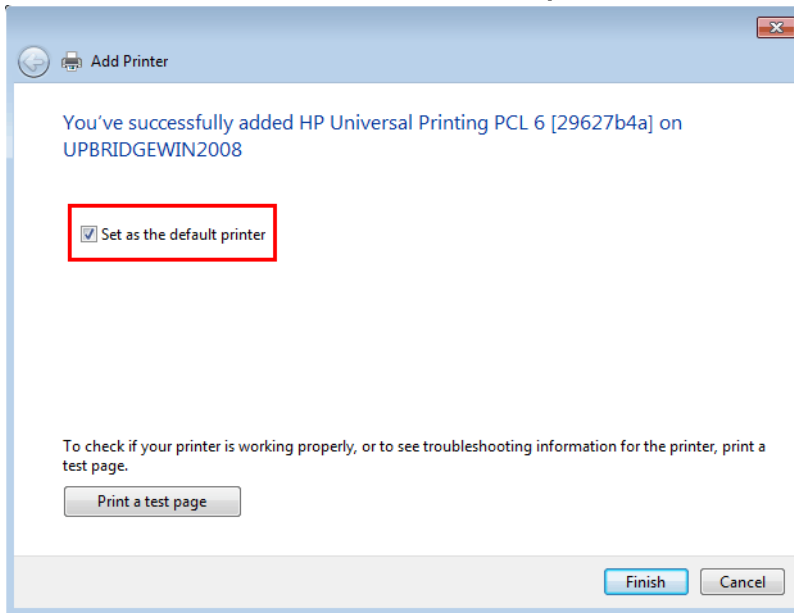
- Click to select a Gateway printer and then click **Next**. Hash numbers are used to ensure that each Gateway printer is unique and for users they are good indicators that the printer is indeed a Gateway printer.



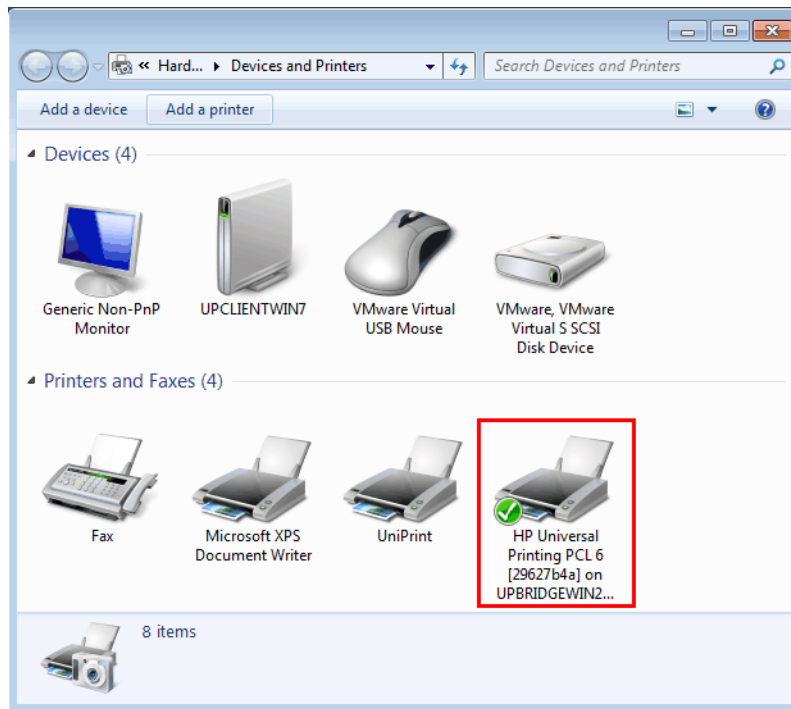
- Click **Next**.



- If you want this printer to be set as the default, select **Set as default printer** and then click **Finish**.



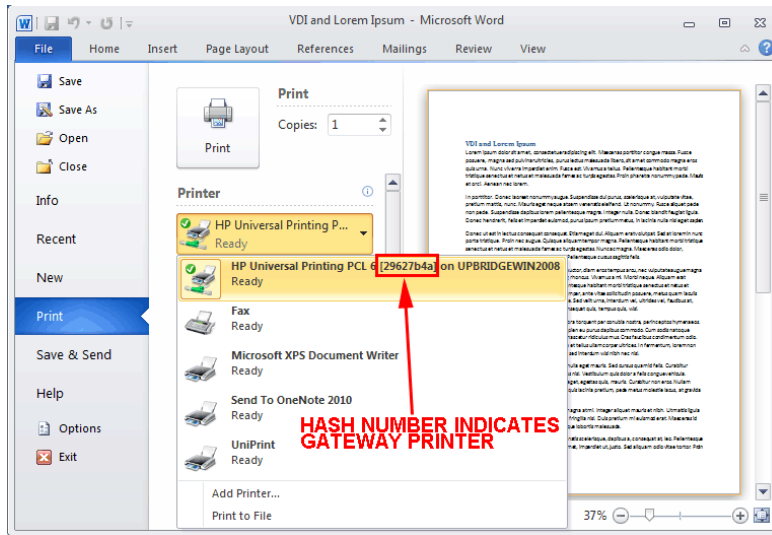
- The Gateway printer is now added to the virtual desktop image and is available for printing.



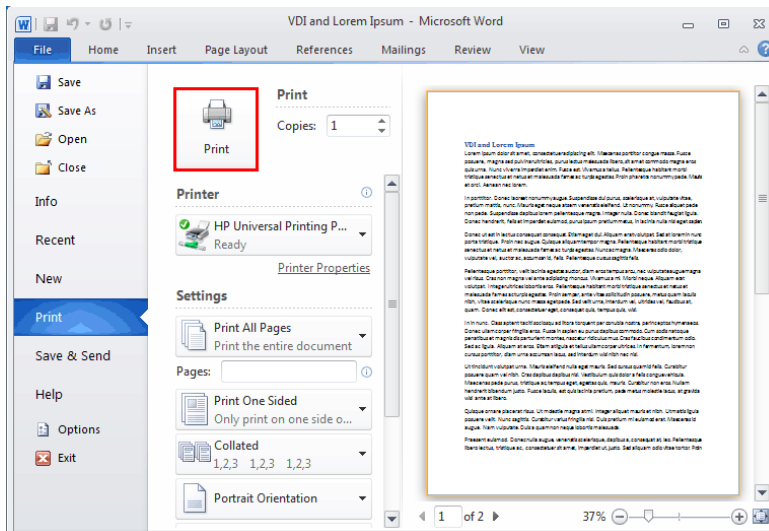
## Printing From A Virtual Desktop Image

- Log onto a virtual desktop image as you normally would to access applications.
- Open an application from which to print, for example, Microsoft Word.
- Print from the application. For example, in Microsoft Word 2010, from the **File** menu, click **Print**.

4. Select the test Gateway printer.



5. And then click **Print**.



- The document will be sent to the workstation with a watermark printed across each page. To remove this watermark, contact [sales@uniprint.net](mailto:sales@uniprint.net) to request a demo license.

