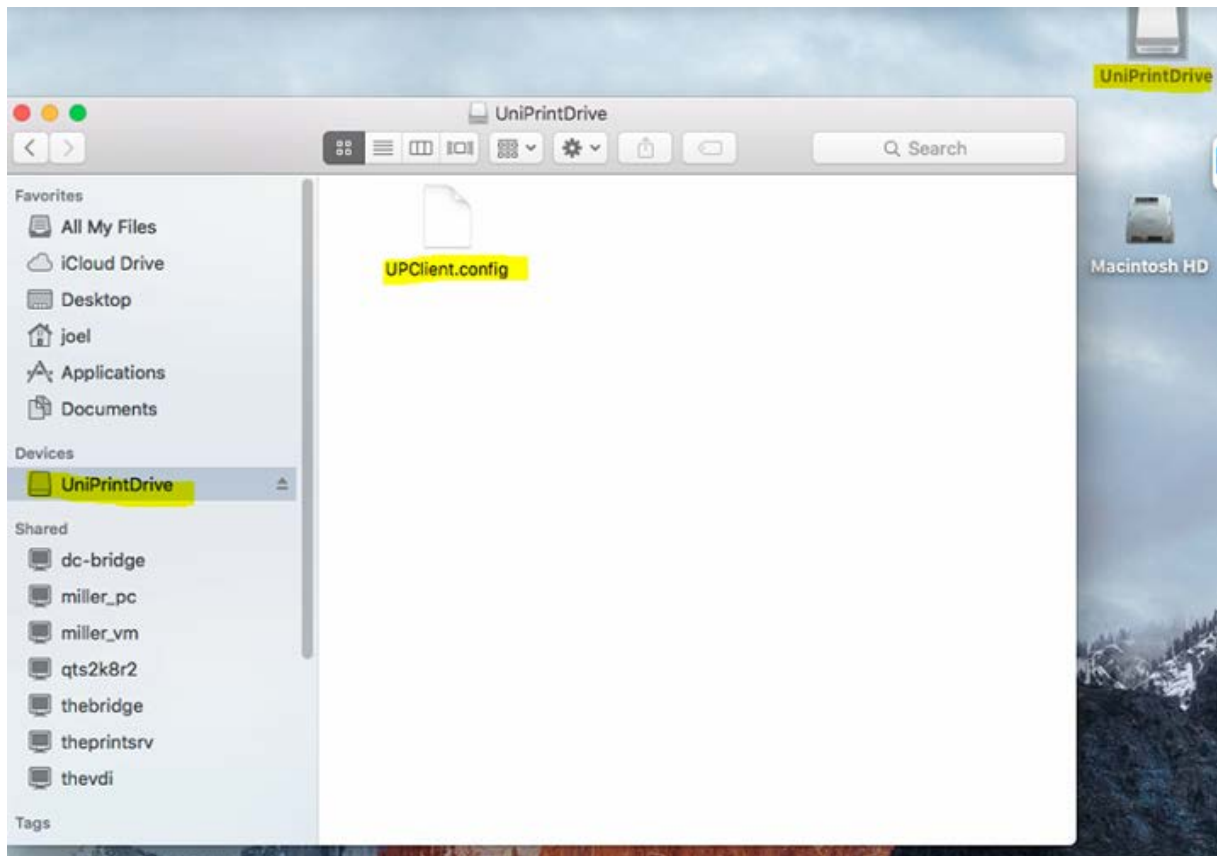


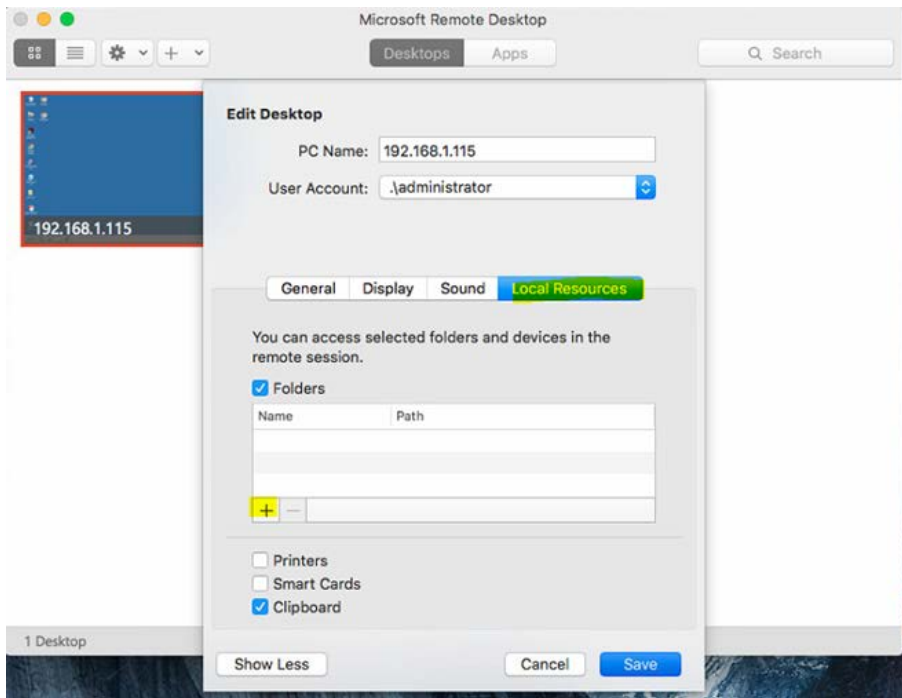
Tutorial: Configure Microsoft Remote Desktop 10.1.x to work with MacOS 10.12 and Older with UniPrint Mac Client.

It has been found that when Microsoft Remote Desktop version 10.1.x is installed on Macs with MacOS version 10.12 "Sierra" and older, then the UniPrintDrive is not able to be added as "Local Resources".

To resolve this issue it is advised to downgrade to the Microsoft Remote Desktop version 8.x.x, or follow the instruction below, on how to configure the new Microsoft Remote Desktop [version 10.1.4] to work with the older MacOS's.

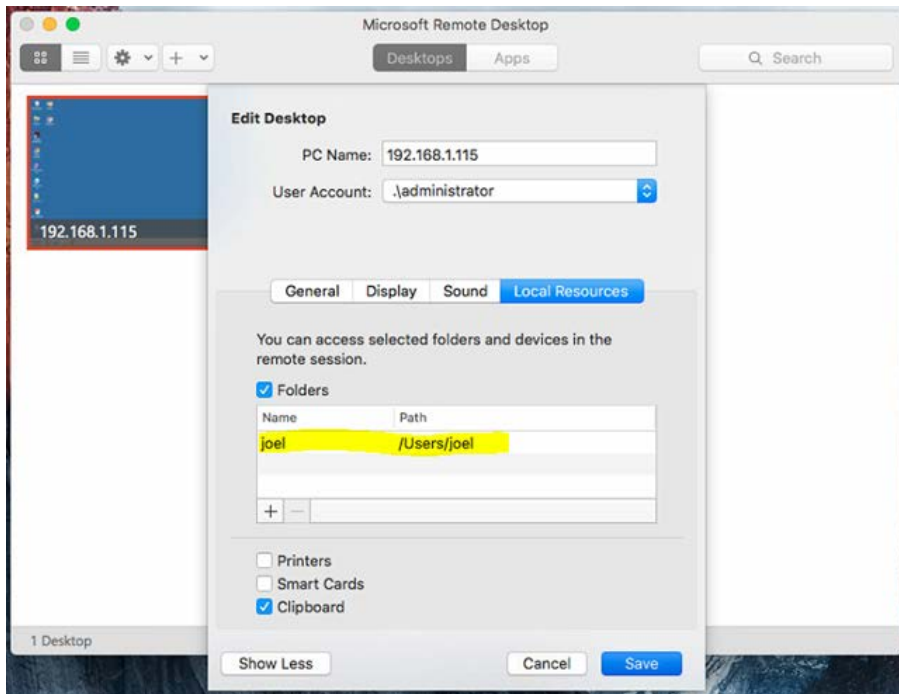
When you install and run the UniPrint Mac client it will create a "UniPrintDrive". The regular setup is to have this drive redirected to the user session on the RDS Server, by configuring "Local Resources" in the Microsoft Remote Desktop [version 10.1.4]. This is configured from the option below:-



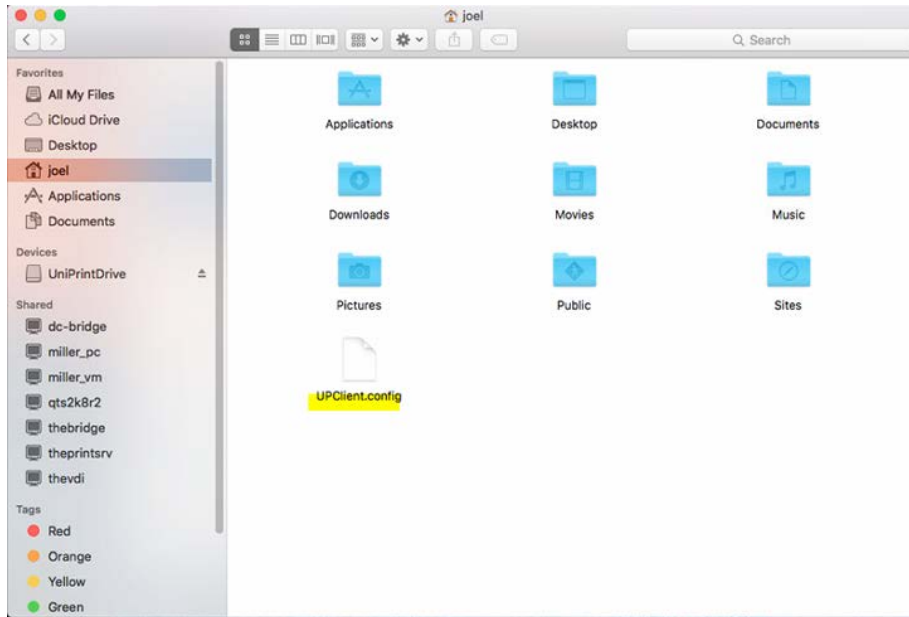


Try adding UniPrintDrive in this folder setting. It was found not possible with Microsoft Remote Desktop version 10.1.4, but worked fine with version 8.x.x.

If you are not able to add the UniPrintDrive, I recommend adding the user Home folder to the "Local Resources" then.



Then make sure you copy the file call "UPClient.config" from the UniPrintDrive folder to the user home folder [Note: This file is just a blank file, and can be created with a text editor].



Note: If you have MacOS version 10.13 "High Sierra", then there should be no issues adding the UniPrintDrive as a Microsoft Remote Desktop version 10.1.4 "Local Resources".