

# UniPrint PoC Requirements & Architectural Design

This document outlines the high level overview of UniPrint & components and the systems requirements for High Availability setup

UniPrint Infinity v9.1

August 2017

## Table of Contents

PoC Requirements – High Availability..... 2

UniPrint High Level Overview – Architectural Design..... 4

Components..... 5

High Availability Setup ..... 6

How to Register..... 6

Contact Information..... 6



## PoC Requirements – High Availability

### **UniPrint Bridge requires one of the following supported operating systems:**

- Microsoft Windows Server 2008 R2
- Microsoft Windows Server 2012 R2
- Microsoft Windows Server 2016
- Minimum 4 virtual processors
- Minimum 100GB of Hard Drive Space
- Minimum 8GB RAM

### **UniPrint Print Server requires one of the following supported operating systems:**

- Microsoft Windows Server 2008 R2
- Microsoft Windows Server 2012 R2
- Microsoft Windows Server 2016
- Minimum 4 virtual processors
- Minimum 100GB of Hard Drive Space
- Minimum 8GB RAM

### **UniPrint Application Server Agent requires one of the following supported operating systems:**

- Microsoft Windows Server 2008 R2 with Remote Desktop Services role
- Microsoft Windows Server 2012 or R2 with Remote Desktop Services role
- Microsoft Windows Server 2016 with Remote Desktop Services role
- Minimum 4 virtual processors
- Minimum 80GB of Hard Drive Space
- Minimum 8GB RAM

### **When deployed in a VDI environment, UniPrint Application Server is installed on each golden image with one of the following supported operating systems:**

- Microsoft Windows 7
- Microsoft Windows 8/8.1
- Microsoft Windows 10

**NOTE:** All UniPrint components require .NET Framework 4.5. If only .NET Framework 4.0 has been installed, then .NET Framework 4.5 is still required.



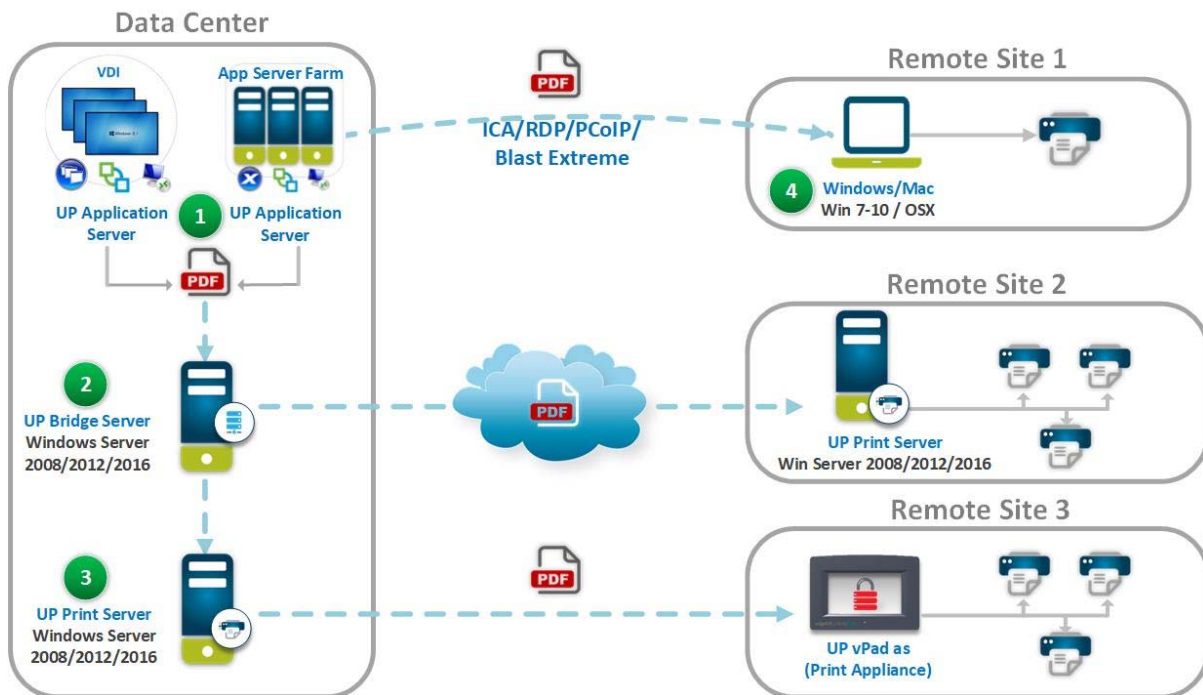
**Database Server (Microsoft SQL Server)**

- Minimum 2 virtual processors
- Minimum 8GB RAM
- Minimum 80GB of Hard Drive Space
- Database access

Setting up UniPrint Infinity in an HA setup, requires an external, centralized database, such as Microsoft SQL Server. Setting up an external database will enable Printer Profiles and PrintPAL mappings to be replicated and reduces interruptions to SecurePrint and the Statistics modules.



## UniPrint High Level Overview – Architectural Design



### Remote Site 1 (Server/Client Setup)

- End users printing from their sessions to local printers on workstations

### Remote Site 2 (Gateway Setup)

- End users printing to printers on print servers at their remote locations

### Remote Site 3 (Gateway – Enhanced)

- Print servers are consolidated and moved to the data center. UniPrint vPad is used at the remote sites to reduce print data bandwidth consumption as print jobs go from data center to remote sites.

uniprint™

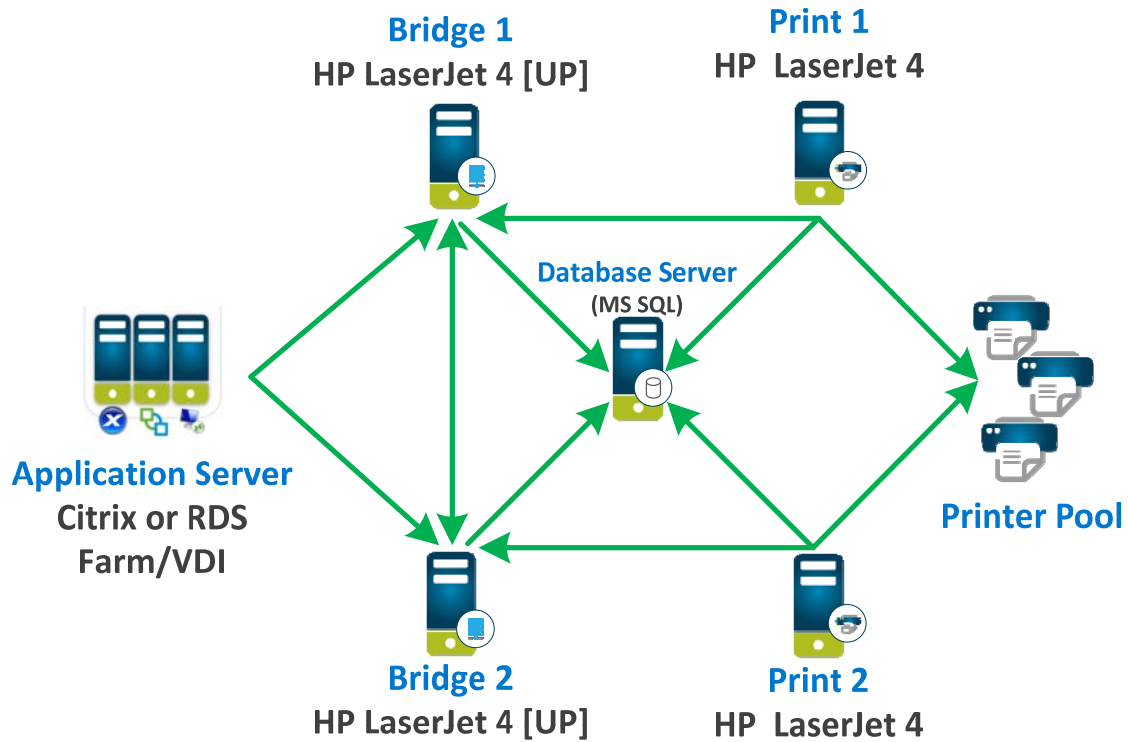
how the world prints

## Components

1. Bridge Server
  - Is the only dedicated server required in the solution. It functions as a license server and a central print management server, it also hosts virtual print jobs when using the UniPrint VPQ.
2. Print Server
  - This is typically a Windows print server. UniPrint installs on top of existing Microsoft print servers and collects all printer data and sent them to the Bridge Server.
3. Application Server
  - Also known as the UniPrint agent, it is the universal printer driver engine which converts print jobs to PDF files in the background. It also provides the location-based printing services and virtual print queue. Install it anywhere applications run.
4. UniPrint Client
  - Install UniPrint client on any Windows or Mac OSX endpoints that you would like to use for Server/Client printing.
5. Database Server (Microsoft SQL Server)
  - Centralized database stores Printer Profiles and PrintPAL mappings to be replicated and reduces interruptions to SecurePrint and the Statistics modules.



## High Availability Setup



## How to Register

Go to <https://members.uniprint.net/register.php>

## Contact Information

### UniPrint Support

Phone: +1 416-848-0329 (Worldwide)  
Toll-free 1-866-488-3188 option 3 (North America only)  
+44 1344-206144 (United Kingdom and Europe)  
[support@uniprint.net](mailto:support@uniprint.net)



how the world prints